

# GIBBONS

## COACH HOLIDAYS

Over 20 Years Experience

Holiday Hotline

**01443 710604**

[www.gibbonscoaches.com](http://www.gibbonscoaches.com)

ALL NEW LUXURY COACHES  
ALL YOUR FAVOURITE UK DESTINATIONS





# WELCOME

Your Holiday Starts Here ...



**Gibbons Coaches is a well-established family run business specialising in Coach Holidays, Coach Hire and Short Breaks.**

Established in 1993 we have been providing the finest coach holidays for over 20 years catering for all needs & budgets. From Mid-Week Breaks, Weekend Breaks and One Night Stays – We have a holiday for you!

At Gibbons Coaches we are lucky to boast a fleet of some of the newest coaches on the road which are luxurious and are of the highest quality, a comfortable journey is guaranteed. Each of our coaches is individually designed with a different design and colour theme so every time you step onto our coaches it will feel like the first time.

It is our aim to provide the finest UK coaching holidays for all types of people and budgets. We stay at quality hotels, operate the best vehicles, use knowledgeable drivers and pride ourselves on that personal touch to create a coach holiday experience you will cherish forever.

From Mid-Week Breaks, Weekend Breaks and One Night Stays one thing is for sure when you treat yourself to a Gibbons Coach Holiday you will be amazed by the warm, friendly and helpful way you are looked after whenever you travel with us.

**You will have a superb choice of destination in the UK.**  
Our holidays are not just a coach transfer, hotel and excursions; they are a wonderful experience for you to remember always.

Gibbons Coaches recognise the importance of having a high standard of coach and driver; all the tours offer executive facilities including an on-board toilet, reclining seats, TV and video and a hot drinks service. Our drivers are carefully chosen for their experience and professional approach to making sure you receive a quality service and have a great time.



**Pick Up points**

At Gibbons Coaches we will do our best to ensure there is a pick up point as close to you as possible.

To do this we operate a feeder service unlike any other company that covers most of South Wales. On this service we use either 8 or 14 seat minibuses to keep the travel time down to a minimum and get you to the coach as quickly as possible.

If you do not wish to use our free feeder service then you can arrange to meet the coach at it's departure point, which is mainly Newport train station for all south bound holidays or Brynmawr bus station for all north bound holidays.

**Short Breaks 2-3 days**

Cotswolds	8
London	17

**Uk Destinations 4-5 days**

Blackpool	3/4
Bournemouth	5
Bridlington	6
Cornwall Explorer	7
Eastbourne	9/10
Great Yarmouth	12/13
Isle of Wight	14
Llandudno	15/16
Newquay	18
North Wales Explorer	19
Scotland	20/21
Skegness	22
Southport	23
St. Ives	24
Torquay	25
Weymouth	26
Yorkshire Explorer	27
Yorkshire Television	28/29

**Uk Destinations 6-8 days**

Cornwall Explorer	7
Eastbourne	10
Great Yarmouth	13
Isle of Wight	14
Southport	23
Weymouth	26

**Turkey & Tinsel**

Bournemouth	5
Cornwall Explorer	7
Eastbourne	10
Exmouth	11
Great Yarmouth	13
Isle of wight	14
Llandudno	15
Newquay	18
Southport	23
St. Ives	24
Torquay	25
Weymouth	26
Christmas 2017	30
New Year 2018	31

Gibbons Holidays are members of the Bonded Coach Holiday Group of the Confederation Of Passenger Transport UK Ltd. This is a government approved consumer protection scheme.

This ensures that in relation to the coach package holidays described in this brochure (or website) that the clients' monies are protected by a Bond which may be called upon in the unlikely event of the Member's Insolvency.

Clients are recommended to inspect the current membership certificate at our registered office or alternatively go to [www.bch-uk.org](http://www.bch-uk.org) or telephone 0207 240 3131 to confirm current membership.

Your attention is also drawn to the Bonded Coach Holiday Group Trading Charter that will apply to these coach package holidays, a copy of which is available upon request.

# BLACKPOOL

## BRITAIN'S FAVOURITE SEASIDE RESORT

**Thrill-seekers can brave the white-knuckle rides of the Pleasure beach or relax with some serious retail therapy, with a trip to Blackpool's indoor shopping centre.**

In the heart of the resort, just a stone's throw from the Promenade. In the Autumn Blackpool Illuminations is Britain's most famous light show and one of the most iconic sights in British culture and will not disappoint.

## HOLIDAY EXCURSIONS

While on this holiday you will enjoy beautiful Excursion(s) which would be confirmed prior to departure:

**Excursion** Cleverlys and Fleetwod market – A popular shopping outlet in Cleverlys and then on to the hustle and bustle of Fleetwood market.

**Excursion** to the seaside resort of Southport famous for its gardens, shopping and pier.



The Georgian Hollies - Twin Room

## PRICE INCLUDES

- Accommodation on a half board basis
- Free excursion(s)
- Entertainment most evenings
- Free feeder service
- Luxury executive coach travel



Call Our Booking Office: **01443 710604**



Cabaret Lounge at The Georgian Hollies

## THE GEORGIAN HOLLIES

**At the heart of Blackpool's vibrant centre on Albert Road just 5 minutes' walk from the famous Blackpool Tower is The Georgian Hollies Hotel.**

Guests have bright, modern rooms and free Wi-Fi in public areas. All rooms are well-equipped with complimentary tea and coffee, a flat-screen LCD TV and a en-suite bathroom.

Tasty home-cooked food is served. For breakfast guests have a wide choice of cold buffet or cooked full English options.

Cabaret Lounge offers a lively atmosphere, with music, quizzes and live cabaret acts performing throughout the summer.

Guests can also relax in the hotel lounge, which features a 42-inch plasma TV and there is a second small family-friendly bar with a pool table and a large TV.

DEPARTURE DATES	DURATION	PRICE PP
25th September 2017	5 Days	£220.00
13th October 2017	4 Days	£179.00
27th October 2017	4 Days	£179.00
7th April 2017 *	3 Days	£149.00

\* Grand National (Tickets available if required)  
No Single Supplement



The Georgian Hollies - Bar



The Georgian Hollies - En-Suite and Double Room





# BLACKPOOL

## THE PREMIER NORTH-WEST RESORT

**Britain's favourite seaside resort with loads of great attractions you will never be bored.**

Thrill-seekers can brave the white-knuckle rides of the Pleasure beach or relax with some serious retail therapy, with a trip to Blackpool's indoor shopping centre.

In the heart of the resort, just a stone's throw from the Promenade. In the Autumn Blackpool Illuminations is Britain's most famous light show and one of the most iconic sights in British culture and will not disappoint.

## HOLIDAY EXCURSIONS

While on this holiday you will enjoy beautiful Excursion(s) which would be confirmed prior to departure:

**Excursion** Cleverlys and Fleetwod market – A popular shopping outlet in Cleverlys and then on to the hustle and bustle of Fleetwood market.

**Excursion** to the seaside resort of Southport famous for its gardens, shopping and pier.



The Suncliffe Hotel - Room

## PRICE INCLUDES

- Accommodation on a half board basis
- Free excursion(s)
- Entertainment most evenings
- Free feeder service
- Luxury executive coach travel



## THE SUTCLIFFE HOTEL

**Sutcliffe Hotel is set on Albert road just 550 yards from Blackpool's Winter Gardens and its famous Illuminations.**

Blackpool Pleasure beach and Blackpool Tower is situated within walking distance. It features a restaurant, lounge and rooms with private bathrooms. Each of the rooms at the family-run Sutcliffe Hotel has flat-screen TV and tea and coffee-making facilities.

The restaurant serves traditional British cuisine and lighter dishes throughout the day. Bars and attractions can be found along Blackpool's seafront and in the town centre.

DEPARTURE DATES	DURATION	PRICE PP
3rd July 2017	5 Days	£239.00
7th August 2017	5 Days	£239.00
18th September 2017	5 Days	£239.00
20th October 2017	4 Days	£189.00
23rd October 2017	5 Days	£239.00

Single Supplement Charges Apply







Spacious Rooms at The Ullswater Hotel

# BOURNEMOUTH

## A COASTAL TOWN

**With seven miles of golden sands and sparkling sea, the vibrant cosmopolitan town of Bournemouth has it all.**

Explore a vast variety of shops and restaurants, a buzzing night-life and endless countryside with beautiful award winning gardens and water sports galore.

## HOLIDAY EXCURSIONS

While on this holiday you will enjoy beautiful Excursion(s) which would be confirmed prior to departure.

**Excursion** to the beautiful Weymouth one of the UK's most beautiful seaside resorts, and blessed with one of its sunniest and warmest climates, Weymouth offers a huge amount of activities and attractions to offer people of all ages.

**Excursion** to the seaside town of Poole which has plenty to see and do from shopping to visiting the potteries where you can see the skilled craftsmen at work.

**Excursion** to the medieval cathedral city of Salisbury which is known as the city in the countryside.

**Excursion** to the pretty seaside town of Swanage where it has it's own working steam train station which is a must see.

**Please Note:** On 4 day holidays there will 1 excursion, 5 days there will be 2 excursions, 6-8 days there will be three excursions.

## THE ULLSWATER HOTEL

**Set within sight of the sea, 150 yards from the cliff top and situated in the most favoured position on the West Cliff of Bournemouth.**

Only a few minutes walking distance of Bournemouth's sandy beaches that offer the most amazing views of the Purbecks. It is also situated close to the Bournemouth International Centre where many exciting events are held all year round.

This hotel has a lift that services all floors and the 3rd is totally flat with no stairs or steps. The Hotel has undergone recent renovation and is renowned for its excellent service and fantastic meals.

DEPARTURE DATES	DURATION	PRICE PP
22nd May 2017	5 Days	£239.00
16th June 2017	4 Days	£189.00
19th June 2017	5 Days	£239.00
3rd July 2017	5 Days	£239.00
15th August 2017	5 Days	£269.00
<b>TURKEY &amp; TINSEL</b>		
27th November 2017	5 Days	£220.00

Single Supplement Charges Apply



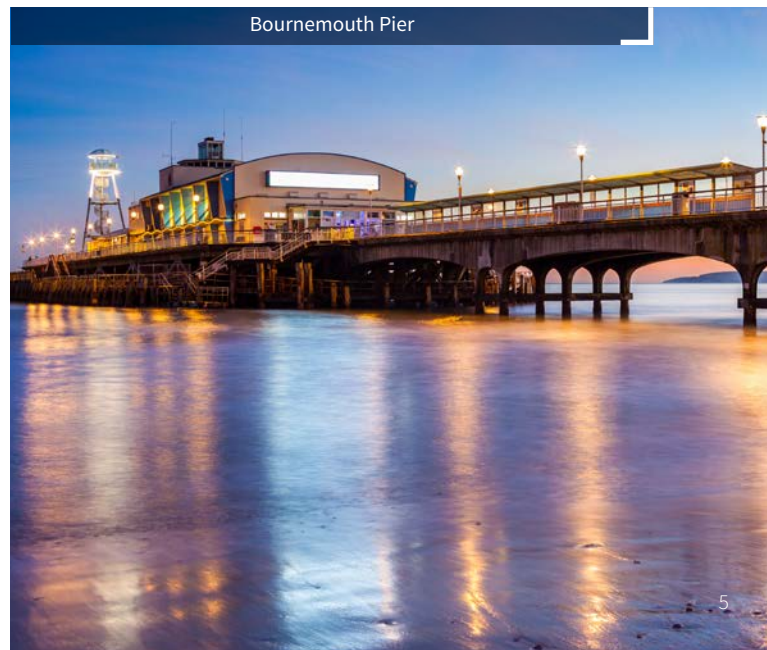
The Ullswater Hotel

## PRICE INCLUDES

- Accommodation on a half board basis
- Free excursion(s)
- Entertainment most evenings
- Free feeder service
- Luxury executive coach travel



Bournemouth Pier







# BRIDLINGTON

## PACKAGE DEAL

**Bridlington is a holiday resort in Yorkshire. The town, is situated on the East coast of Yorkshire.**

Bridlington's fine promenade is crammed amusements and the town lays claim to two award-winning sandy beaches which straddle Bridlington's harbour.

Bridlington's blue flag north beach and South Beach have been accredited with Keep Britain Tidy Awards.

## THIS PACKAGE INCLUDES

- **Big hearty breakfast**
- **5 course evening meal every night**
- **Unlimited £1 bar**



The Balmoral Hotel - Twin Room

## PRICE INCLUDES

- 4 Nights dinner, bed & breakfast
- 'All in package' as stated above
- Free excursions
- Entertainment every evening
- Free feeder service
- Luxury executive coach travel



## THE BALMORAL HOTEL

**Situated just off the Promenade, 25 yards from Bridlington town centre, 25 yards from the seafront and next door to the Leisure World.**

The Hotel also boasts great food with entertainment every night.

Staff at the Balmoral are always warm and welcoming and will do the utmost to ensure that you have the best time possible.

DEPARTURE DATES	DURATION	PRICE PP
18th March 2017	5 Days	£239.00
21st April 2017	5 Days	£239.00
17th May 2017	5 Days	£269.00
6th October 2017	5 Days	£239.00

Single Supplement Charges Apply







# CORNWALL

## EXPLORER

**Take this opportunity to visit some of the most beautiful areas in the south west of England.**

We will use Newquay as our base and every morning you will depart on a journey to explore the surrounding towns villages and attractions.

### ON THIS HOLIDAY YOU WILL VISIT THESE BEAUTIFUL DESTINATIONS

**Port Isaac** - The beautiful and picturesque fishing village of Port Isaac where the filming of doc martin took place.

**Boscastle** - The lovely fishing port of Boscastle that is reborn after the horrendous floods of 2004.

**Looe & Polperro** - A busy fishing port, with a popular family beach, Looe has been a favourite holiday destination since Victorian times and also the pretty village of Polperro.

**Cornish gold mine** - A unique visitor experience set in the tin mining landscape of Cornwall.

**Falmouth** - A large coastal town which has a fascinating maritime heritage, Falmouth is building a name for itself as one of the South West's leading cultural and festival destinations.

**Padstow** - The charming working fishing port surrounded by glorious sandy beaches, at the head of the Camel River.

**Truro** - Not only is Truro regarded as the capital of Cornwall it is also known as Cornwall's retail centre, so you can shop until you drop.

### PRICE INCLUDES

- Accommodation on a half board basis
- Free excursions
- Entertainment most evenings
- Free feeder service
- Luxury executive coach travel



## SANDY LODGE HOTEL

**The Sandy Lodge Hotel in Newquay is an excellent family run hotel based in Cornwall's premier resort.**

Situated close to the seafront of Newquay Bay, the hotel features en-suite bedrooms accompanied by excellent British Homemade Cuisine including our "All you can Eat" Full English Breakfast, Homemade Soups, Great British Roast Dinners and Desserts to die for every day.

A friendly approach to customer service and with entertainment provided most nights you can be assured sure of a great time at one of Newquay's friendliest Hotels. Also the ideal location means that you will only be a few minutes away from the superb Newquay beaches and local shops.

DEPARTURE DATES	DURATION	PRICE PP
13th March 2017	5 Days	£189.00
3rd April 2017	5 Days	£199.00
24th April 2017	5 Days	£220.00
29th May 2017	5 Days	£239.00
17th June 2017	8 Days	£349.00
28th August 2017	5 Days	£259.00
23rd September 2017	8 Days	£349.00
9th October 2017	5 Days	£220.00
<b>TURKEY &amp; TINSEL</b>		
30th October 2017	5 Days	£220.00

No Single Supplement



Sandy Lodge Hotel







# COTSWOLDS

## EXPLORER

The Cotswolds area is one of England's most beautiful destinations; famous for hundreds of honey-colour limestone villages in a beautiful rural setting.

The Cotswolds offers fantastic walking, beautiful gardens, bustling farmers' markets and a delightful cafe culture.

## ITINERARY

### Day 1

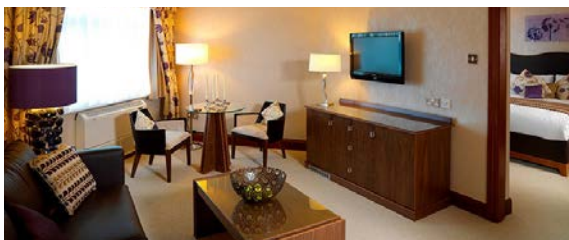
We depart your local pickup point and make our way to the pretty village of Broadway in Worcestershire from there we will stop at Stow on the Wold and then onto the picturesque village of Burton on the Water.

We will then check into The Jurys Inn Hotel in Cheltenham for your evening meal and overnight stay.

### Day 2

After a hearty breakfast at the hotel we will head for the villages of Bibury and Arlington Row, described by William Morris as the prettiest villages in England.

In the afternoon we will move on to the town of Cirencester before making our way back to South Wales in the early evening.



Jurys Inn Hotel - Rooms

## JURYS INN HOTEL

Set in attractive grounds, this 4-star hotel offers a Health & Leisure Club with heated indoor pool, 2 tennis courts and Elegant rooms which feature smart décor and include a TV, tea/coffee making facilities and en suite bathroom with hairdryer and toiletries.

You can enjoy a full English breakfast daily and the award-winning Burford Room Restaurant offers an enticing menu of British and European cuisine. The Lounge Bar also serves light snacks and drinks.

The hotels Health & Leisure Club boasts a hot tub, sauna and a fully equipped gym. The hotel also provides a good base for exploring the beautiful Cotswolds.

DEPARTURE DATES	DURATION	PRICE PP
30th July 2017	2 Days	£89.50
20th August 2017	2 Days	£89.50

Single Supplement Charges Apply



Jurys Inn Hotel - Indoor Leisure



Jurys Inn Hotel - Dining







# EASTBOURNE

## SOUTH EAST COST

**Eastbourne is an elegant resort at the foot of the South Downs in Sussex.** Friendly hotels and exciting events make it one of the favourite holiday destinations for our customers with its flat promenade, summer flower displays and bustling town centre.

## EXCURSIONS

While on this holiday you will enjoy beautiful Excursion(s) which would be confirmed prior to departure. These excursion(s) could be from the following:

**Brighton** – Visit one of Britain’s most famous seaside destinations, This place really does have something for everyone.

**Hastings** – A beautiful town which is rich with history and has strong maritime and cultural connections.

**Worthing** – The Classic British seaside town of Worthing which is both rich with history and up to date with its modern shopping centre.

**Please Note:** On 4 day holidays there will 1 excursion, 5 days there will be 2 excursions, 6-8 days there will be three excursions.



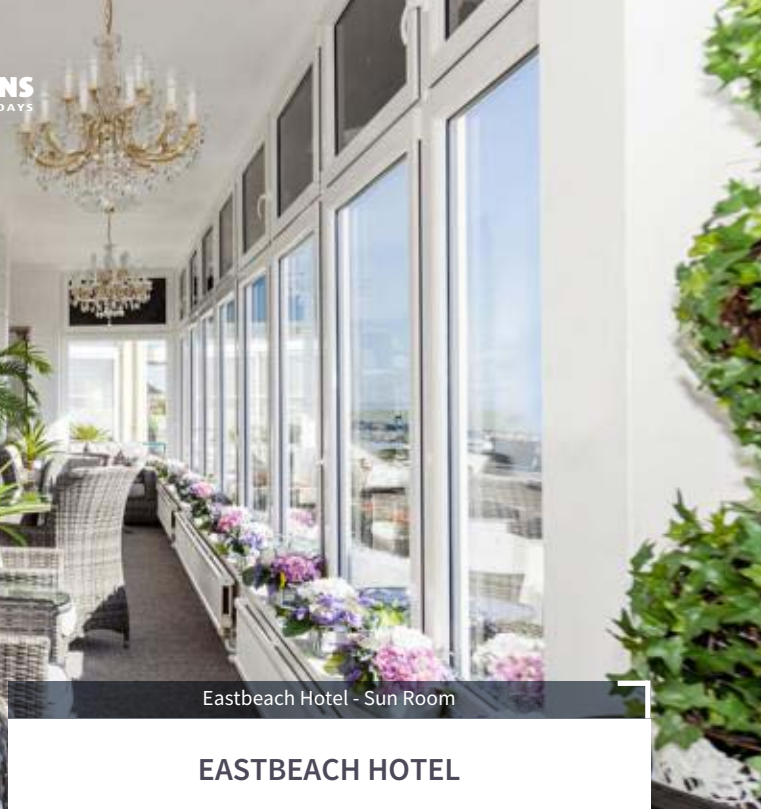
Eastbeach Hotel - Single Bedroom

## PRICE INCLUDES

- Accommodation on a half board basis
- Free excursion(s)
- Entertainment most evenings
- Free feeder service
- Luxury executive coach travel



Call Our Booking Office: **01443 710604**



Eastbeach Hotel - Sun Room

## EASTBEACH HOTEL

**Located in a prime position on Eastbourne’s glorious seafront, overlooking the beach and the pier, the East Beach Hotel offers luxurious and relaxing accommodation for all visitors.**

The East Beach Hotel has recently undergone extensive renovation and re-design.

DEPARTURE DATES	DURATION	PRICE PP
20th March 2017 *	5 Days	£169.00
17th April 2017	5 Days	£189.00
15th May 2017	5 Days	£220.00
16th October 2017	5 Days	£220.00
<b>TURKEY &amp; TINSEL</b>		
6th November 2017	5 Days	£220.00
15th December 2017 **	4 Days	£129.00

\* £1 Bar  
\*\* Special Offer  
No Single Supplement



Eastbeach Hotel - Double Bedroom



Eastbeach Hotel





# EASTBOURNE

## SOUTH EAST COST

**Eastbourne is an elegant resort at the foot of the South Downs in Sussex.** Friendly hotels and exciting events make it one of the favourite holiday destinations for our customers with its flat promenade, summer flower displays and bustling town centre.

### EXCURSIONS

While on this holiday you will enjoy beautiful Excursion(s) which would be confirmed prior to departure. These excursion(s) could be from the following:

**Brighton** – Visit one of Britain’s most famous seaside destinations, This place really does have something for everyone.

**Hastings** – A beautiful town which is rich with history and has strong maritime and cultural connections.

**Worthing** – The Classic British seaside town of Worthing which is both rich with history and up to date with its modern shopping centre.

**Please Note:** On 4 day holidays there will 1 excursion, 5 days there will be 2 excursions, 6-8 days there will be three excursions.



Haddon Hall Hotel - Ballroom

### PRICE INCLUDES

- Accommodation on a half board basis
- Free excursion(s)
- Entertainment most evenings
- Free feeder service
- Luxury executive coach travel



## THE HADDON HALL HOTEL

**Situated just a 1-minute walk from Eastbourne seafront and the Bandstand, Haddon Hall Hotel offers well-appointed rooms and an elegant restaurant.**

The Haddon Hall Hotel is situated in Devonshire Place, a broad tree lined avenue linking the sea front and shopping centre. All rooms have a flat-screen TV, wardrobe and tea and coffee facilities. Each room has an en-suite bath or shower.

The restaurant offers traditional English and European dishes. Live entertainment is regularly offered in the hotel ballroom.

DEPARTURE DATES	DURATION	PRICE PP
6th February 2017 *	5 Days	£169.00
10th March 2017	4 Days	£169.00
28th April 2017 **	5 Days	£269.00
9th June 2017	5 Days	£279.00
8th July 2017	5 Days	£289.00
2nd August 2017	5 Days	£289.00
2nd September 2017	8 Days	£389.00
<b>TURKEY &amp; TINSEL</b>		
10th November 2017	4 Days	£199.00
27th November 2017	5 Days	£289.00
1st December 2017	4 Days	£199.00

\* £1 Bar  
\*\* £1 Bar & Bank Holiday  
No Single Supplement



The Haddon Hall Hotel





# EXMOUTH

## SOUTH DEVON COAST

The port town of Exmouth is situated at the mouth of the beautiful Exe Estuary and at the very beginning of the Jurassic Coast, Exmouth is one of the most picturesque holiday resorts on the south coast.

Surrounded by the beautiful Devon countryside, Exmouth is a bustling little town with a vibrant shopping centre that also hosts a wide range of leisure and entertainment facilities.

## EXCURSIONS

While on this holiday you will enjoy beautiful Excursion(s) which would be confirmed prior to departure. The excursion(s) could be from the following:

**Torquay** - the English Riviera, is one of the jewels of the South West and has a lot to offer.

**Exeter** - the historic town of Exeter, which is great for shopping and has a beautiful cathedral.

**Sidmouth** - This lovely seaside town is nestled beneath majestic red cliffs and the green hills of the glorious Sid Valley.



The Cavendish Hotel

## PRICE INCLUDES

- Accommodation on a half board basis
- Free excursion(s)
- Entertainment most evenings
- Free feeder service
- Luxury executive coach travel



## THE CAVENDISH HOTEL

Ideally situated on The Esplanade, overlooking Exmouth's golden sandy beaches and picturesque, Cavendish Hotel offers en-suite accommodation, free Wi-Fi and live entertainment.

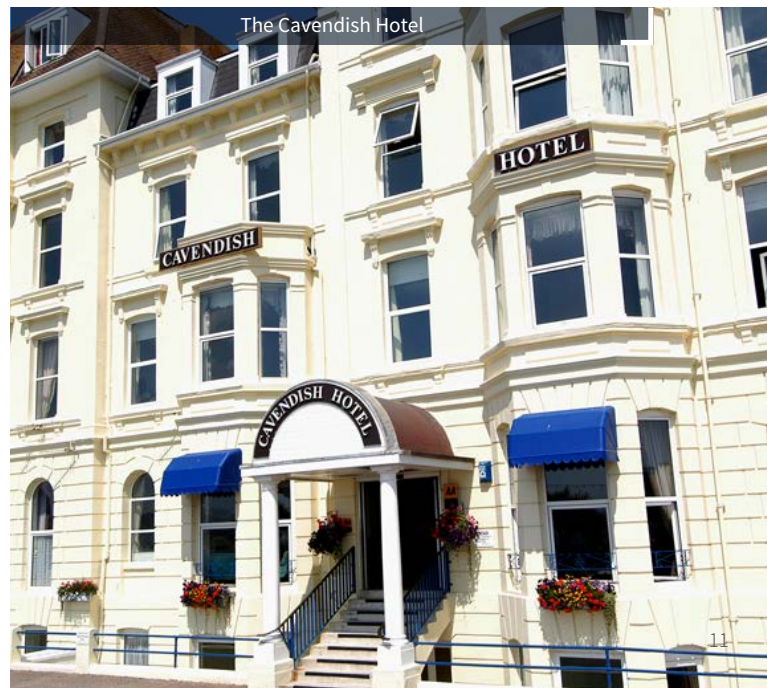
All rooms at Cavendish Hotel feature TV and tea/coffee making facilities.

Some of the rooms offer sea view overlooking the harbour.

The Cavendish is just a few meters from the beach and a short walk from the shops and harbour.

DEPARTURE DATES	DURATION	PRICE PP
<b>TURKEY &amp; TINSEL</b>		
3rd November 2017	4 Days	£179.00
17th November 2017	4 Days	£179.00
8th December 2017	4 Days	£179.00

Single Supplement Charges Apply



The Cavendish Hotel





# GREAT YARMOUTH

## AN IDEAL SEASIDE RESORT

**Great Yarmouth is East Anglia's top seaside resort that has everything you need for the perfect get away.**

There's so much to do and see in Great Yarmouth from the vibrant Golden Mile with all of its exciting attractions, theatres and shops for people of all ages, to the historic features of the town just waiting to be discovered.

## EXCURSIONS

While on this holiday you will enjoy beautiful Excursion(s) which would be confirmed prior to departure. These excursion(s) could be from the following:

**Norfolk Broads** - the UK's largest nationally protected wetland which boast great views and fantastic scenery.

**Cromer** - Perched on the very edge of the north Norfolk coast, is famous for its tasty seafood, wide open beaches, a traditional pier complete with a theatre providing seaside special variety shows and is awash with small local independent shops.

**Lowercroft** - Travel along a nice scenic route to the quiet English town of Lowercroft.

**Norwich** - a wonderful fusion of the modern and historic, one complementing the other. Like any great city its centre is easy to walk around and has a river at its heart.

The city is also a shopper's paradise, with two shopping centres and four department stores, many independent stores and boutiques in the quaint Lanes and Timber Hill. Rated in the Top 10 UK shopping destinations, you'll soon realise why.

**Please Note:** On 4 day holidays there will 1 excursion, 5 days there will be 2 excursions, 6-8 days there will be three excursions.

## PRICE INCLUDES

- Accommodation on a half board basis
- Free excursion(s)
- Entertainment most evenings
- Free feeder service
- Luxury executive coach travel



## THE ROYAL HOTEL

**The Royal Hotel has a fantastic location right on the seafront, the hotel serves excellent food and entertainment most evenings.**

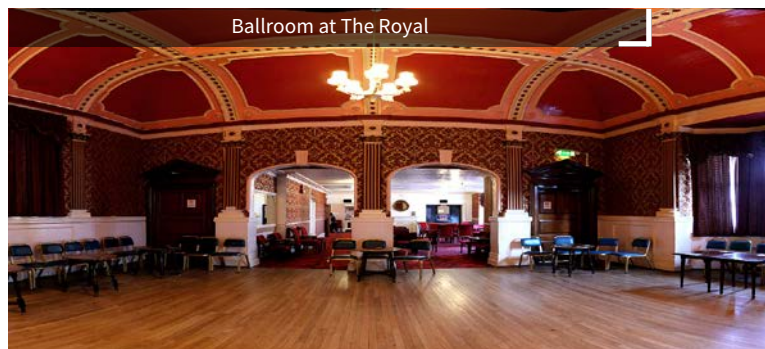
There is a lovely lounge with views of the Marine, Parade. A friendly bar and a spacious dining room makes this hotel one of the best.

DEPARTURE DATES	DURATION	PRICE PP
8th May 2017	5 Days	£239.00
10th July 2017	5 Days	£259.00
7th August 2017	5 Days	£259.00

No Single Supplement



The Royal Hotel



Ballroom at The Royal





## THE ARONA HOTEL

**The Arona hotel is situated just off the Great Yarmouth seafront making Arona hotel ideally situated to explore all of what Great Yarmouth has to offer.**

Having recently undergone a change of ownership the hotel is set to have a complete renovation from October 2016 ready for our 2017 tours with no expense spared.

DEPARTURE DATES	DURATION	PRICE PP
15th May 2017	7 Days	£320.00
24th June 2017	7 Days	£320.00
16th September 2017	6 Days	£320.00

No Single Supplement



The Arona Hotel



Regent Road - Great Yarmouth

## THE ST. GEORGE HOTEL

**The St. George Hotel is situated in a prime position close to the seafront and a nice stroll into the town centre.**

The St George pride themselves on offering a personal service and their courteous staff are on hand to assist with your individual requirements to ensure you will have a welcoming and enjoyable stay.

DEPARTURE DATES	DURATION	PRICE PP
13th February 2017	5 Days	£139.00
20th March 2017	5 Days	£139.00
9th April 2017	5 Days	£189.00
4th June 2017	5 Days	£189.00
23rd July 2017	5 Days	£199.00
13th August 2017	5 Days	£199.00
25th September 2017	5 Days	£189.00
9th October 2017	5 Days	£189.00
<b>TURKEY &amp; TINSEL</b>		
12th November 2017	5 Days	£179.00

No Single Supplement



New Luxury Rooms at The St. George Hotel



The St. George Hotel





# ISLE OF WIGHT

## SANDOWN

**The beautiful island of The Isle of Wight is a place you simply must visit.** Once you have experienced the Isle of Wight you will realise why so many people go back time and time again.

There is so much to see and visit you will be spoilt for choice, from historic sites to natural delights, major national events, the Isle of Wight is a unique holiday destination and has something for everyone.

While on the island we will be staying in Sandown which boasts one of the finest and most recognised beaches on of the Isle of Wight, with miles of soft golden sands crowned by Sandown's pleasure pier.

## EXCURSIONS

While on this holiday you will enjoy beautiful Excursion(s) which would be confirmed prior to departure. These excursion(s) could be from the following:

**A coastal tour to the needles point** - which is famous for its Needles chair lift that transports guests from the cliff-top above Alum Bay down to the beach below. On the return journey we will stop at the Isle of Wight Pearl where they hand make beautiful jewellery made from pearls.

**Newport** - The beautiful historic town of Newport which is referred to as Isle of Wight's capital. As well as the rich history Newport is popular for its shops and markets.

**Ryde** - An Scenic Journey to the seaside town of Ryde the largest town on the island which has more than enough attractions to be seen.

**Rosemary Vineyard** - The islands local vineyard which is one of the largest producers of English wine.

**Please Note:** On 4 & 5 day holidays there will be two excursions and on 6 to 8 day holidays there will be 3 excursions.



Hotel Maria - Bar & Lounge

## PRICE INCLUDES

- Accommodation on a half board basis
- Free excursion(s)
- Entertainment most evenings
- Free feeder service
- Luxury executive coach travel



## THE HOTEL MARIA

**The Hotel Maria is a warm and friendly hotel situated right on Sandown seafront.** With a beautiful sandy beach on its doorstep, it is close to all Sandown's amenities.

The hotel has views over the bay, resulting in light, airy accommodation. Hotel has en-suite bedrooms, tea/coffee making facilities, TV, public telephone and internal telephones.

Hair dryers and irons are also available at reception. The large, modern Bay Vista Lounge has both a well-stocked bar and a dance floor area, where live entertainment and other activities can be enjoyed on most evenings.

DEPARTURE DATES	DURATION	PRICE PP
4th March 2017	6 Days	£179.00
25th March 2017	8 Days	£249.00
14th April 2017	4 Days	£179.00
5th May 2017	4 Days	£169.00
2nd June 2017	4 Days	£169.00
7th July 2017	4 Days	£169.00
22nd July 2017	8 Days	£329.00
5th August 2017	8 Days	£329.00
19th August 2017	7 Days	£299.00
3rd September 2017	6 Days	£289.00
29th September 2017	4 Days	£169.00
<b>TURKEY &amp; TINSEL</b>		
20th November 2017	5 Days	£189.00
24th November 2017	4 Days	£169.00
<b>CHRISTMAS</b>		
23rd December 2017	6 Days	£389.00
<b>NEW YEAR</b>		
29th December 2017	5 Days	£299.00



Sandown Bay



The Hotel Maria





# LLANDUDNO

## NORTH WALES

Come with us to visit one of Britain's finest Victorian seaside resorts, bringing together a lively mix of fun and entertainment.

Its recently regenerated long crescent promenade, wide shopping streets, sweeping sandy beaches and wealth of family attractions make Llandudno a perfect destination for a holiday.

## EXCURSIONS

While on this holiday you will enjoy beautiful Excursion(s) which would be confirmed prior to departure. These excursion(s) could be from the following:

**Llanberis** - A scenic ride through the Snowdon mountains to the village of Llanberis which lies at the foot of Snowdon.

**Betws-Y-Coed** - Another scenic journey through the Snowdon mountains to the beautiful village of Betws-Y-Coed, which has a real alpine feel to it.

**Chester** - The Victorian town of Chester which has a great 'shop till you drop' reputation as well as beautiful Victorian buildings, stunning cathedral and many more.

**Anglesey** - Anglesey the home of peace and quiet. We will travel the beautiful coastline and enjoy the stunning scenery. While on the island we will visit the village that is famously named as Llanfairpwllgwyngyllgogerychwyrndrobwllllantysiliogogoch which holds the world record for the longest named place in the world.

From there we will travel to the beautiful Caernarfon which has a breath taking Castle which is one of the most famous castles in Wales and it really is a must see.

**Please Note:** On 4 day holidays there will 1 excursion, 5 days there will be 2 excursions, 6-8 days there will be three excursions. Llanberis and Betws-y-coed will be visited on the same day.



Chatsworth House - Lounge

## PRICE INCLUDES

- Accommodation on a half board basis
- Free excursion(s)
- Entertainment most evenings
- Free feeder service
- Luxury executive coach travel



Call Our Booking Office: 01443 710604

Chatsworth House - Indoor Pool

## THE CHATSWORTH HOUSE HOTEL

This Victorian property enjoys a stunning seafront position on Llandudno's vast promenade and offers an indoor heated swimming pool.

It is ideally situated for a stroll along the coast, yet is only a stone's throw from Llandudno's shops and the pier. The hotel has all the comforts to keep everyone entertained which include an indoor heated pool and even a toddlers' pool along with sea facing lounge and colourful ballroom.

DEPARTURE DATES	DURATION	PRICE PP
13th February 2017 *	5 Days	£149.00
27th February 2017 *	5 Days	£149.00
13th March 2017 *	5 Days	£169.00
3rd April 2017	5 Days	£209.00
22nd May 2017	5 Days	£229.00
24th July 2017	5 Days	£239.00
14th August 2017	5 Days	£239.00
2nd October 2017	5 Days	£209.00
<b>TURKEY &amp; TINSEL</b>		
6th November 2017	5 Days	£220.00
10th November 2017	4 Days	£169.00
8th December 2017	4 Days	

\* 2 for 1 Bar 18:00 - 21:00  
No Single Supplement



Chatsworth House Hotel - Bar



The Chatsworth House Hotel







GIBBONS  
COACH HOLIDAYS

The Tynedale Hotel - Front

# LLANDUDNO

## NORTH WALES

Come with us to visit one of Britain's finest Victorian seaside resorts, bringing together a lively mix of fun and entertainment.

Its recently regenerated long crescent promenade, wide shopping streets, sweeping sandy beaches and wealth of family attractions make Llandudno a perfect destination for a holiday.

## EXCURSIONS

While on this holiday you will enjoy beautiful Excursion(s) which would be confirmed prior to departure. These excursion(s) could be from the following:

**Llanberis** - A scenic ride through the Snowdon mountains to the village of Llanberis which lies at the foot of Snowdon.

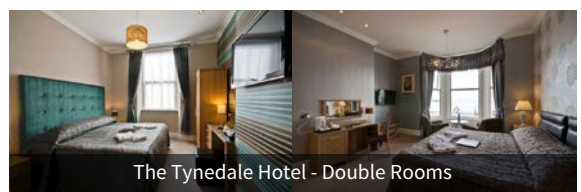
**Betws-Y-Coed** - Another scenic journey through the Snowdon mountains to the beautiful village of Betws-Y-Coed, which has a real alpine feel to it.

**Chester** - The Victorian town of Chester which has a great 'shop till you drop' reputation as well as beautiful Victorian buildings, stunning cathedral and many more.

**Anglesey** - Anglesey the home of peace and quiet. We will travel the beautiful coastline and enjoy the stunning scenery. While on the island we will visit the village that is famously named as Llanfairpwllgwyngyllgogerychwyrndrobwlllandysiliogogoch which holds the world record for the longest named place in the world.

From there we will travel to the beautiful Caernarfon which has a breath taking Castle which is one of the most famous castles in Wales and it really is a must see.

**Please Note:** On 4 day holidays there will 1 excursion, 5 days there will be 2 excursions, 6-8 days there will be three excursions. Llanberis and Betws-y-coed will be visited on the same day.



The Tynedale Hotel - Double Rooms

## PRICE INCLUDES

- Accommodation on a half board basis
- Free excursion(s)
- Entertainment most evenings
- Free feeder service
- Luxury executive coach travel



## THE TYNEDALE HOTEL

Set just 20 metres from the beach. The Tynedale offers modern rooms with flat-screen TV, free tea and coffee and ironing facilities, each spacious room also has bright, stylish décor.

Some rooms also feature views of the coast. Centrally placed on Llandudno's promenade, the pier is a 10-minute walk away. The sleek restaurant and bar provides a varied menu with both modern and classic dishes with regular live evening entertainment.

On arrival guests are greeted with afternoon tea, whilst porters take the luggage to the room. The Tynedale is probably the best hotel in Llandudno and you would struggle to find anything elsewhere to match it.

This hotel is a firm favourite amongst our passengers and it is not surprising why. The Tynedale is also famous for its cruise theme holidays where you would wake up in a different port every morning, sample the captain's table and enjoy the magnificent cruise style buffet.

DEPARTURE DATES	DURATION	PRICE PP
12th February 2017 *	5 Days	£289.00
10th June 2017	5 Days	£299.00
25th August 2017	5 Days	£299.00
22nd September 2017	5 Days	£299.00

\* Cruise Theme  
No Single Supplement



The Tynedale Hotel - Dining



The Tynedale Hotel - Bar & Lounge





# LONDON

## RETAIL THERAPY & SIGHTSEEING

Visit London the nation's capital which has some of the most famous landmarks in the world on one of these top London sightseeing/shopping tours.

### LONDON PALACE & GARDENS

Visit some of London's most historic and beautiful palaces & gardens. On this Tour you will have free entrance into:

**Hampton Court Palace** - The former home of the flamboyant King Henry VIII. He extended and developed this grand palace after acquiring it in the 1520s. Set in 60 acres of formal gardens, including the famous maze and Great Vine, this palace is well worth a visit.

**Kensington palace** - As one of central London's royal residences, Kensington Palace has been a home and refuge to the royal family since the 17th century. Now, it is the official residence to the Duke and Duchess of Cambridge – otherwise known as familiar Kate and Will.

**Kew Gardens** - The world's most famous botanic garden, which boasts landscapes, glasshouses, historic buildings and a vast range of rare and beautiful plants.



Kensington Palace

### PRICE INCLUDES

- Accommodation on a half board basis
- Free excursions
- Free feeder service
- Luxury executive coach travel



## THE ULTIMATE LONDON PACKAGE

Visit some of London's most historic and beautiful attractions. On this Tour you will have free entrance into:

**Windsor Castle** - The impressive and historic Windsor Castle. Famous for its architecture and long-standing Royal place of residence. Windsor Castle is now Queen Elizabeth II's favourite weekend home.

**Kensington palace** - As one of central London's royal residences, Kensington Palace has been a home and refuge to the royal family since the 17th century. Now, it is the official residence to the Duke and Duchess of Cambridge – otherwise known as familiar Kate and Will.

**Afternoon Tea Cruise** - See the best views in London while you tuck into tea, scones and all the trimmings of a traditional afternoon tea on the Thames.

**Tower of London** - The Tower of London is one of the world's most famous fortresses and has seen service as royal palace, prison, armoury and even a zoo. The ancient stones hold within them dark secrets, as fortified vaults shine with priceless jewels and historic uniformed Beefeaters stroll the grounds.

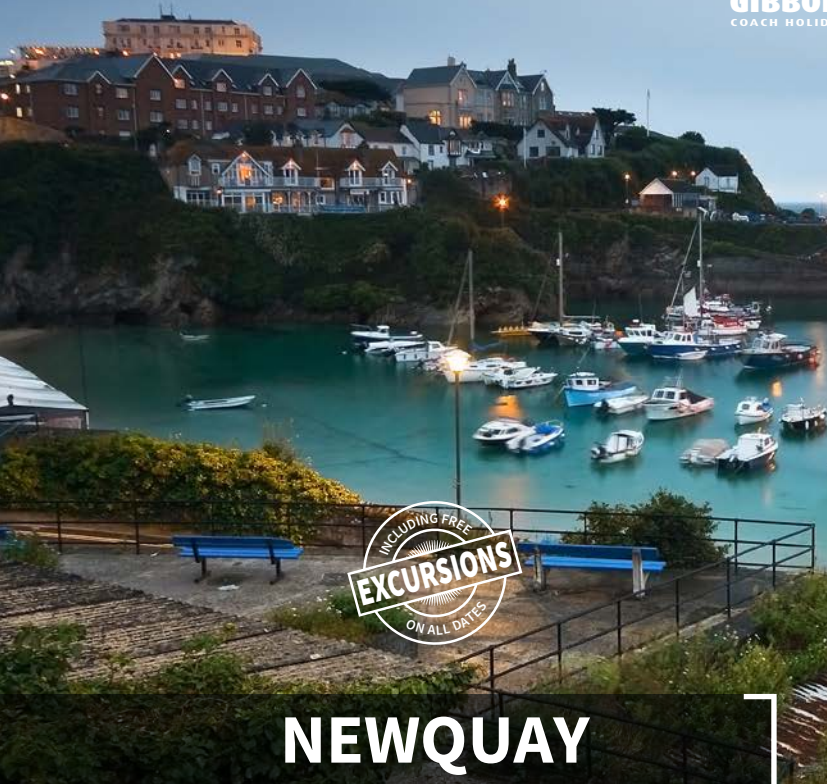
## LONDON SHOPPERS

Enjoying some retail therapy in the capital with our overnight shopping trips and stay at the 4 star Tower hotel.

DEPARTURE DATES	PRICE PP
<b>LONDON PALACE AND GARDENS</b>	
18th April 2017	£179.00
9th May 2017	£179.00
27th June 2017	£179.00
<b>THE ULTIMATE LONDON PACKAGE</b>	
2nd April 2017	£179.00
6th June 2017	£179.00
10th October 2017	£179.00
<b>LONDON SHOPPERS</b>	
29th October 2017	£89.50
3rd December 2017	£89.50
10th December 2017	£89.50

No Single Supplement





# NEWQUAY

## THE JEWEL OF CORNWALL

**Cornwall's number one choice for a holidays.** With sandy beaches, breath taking coastline, busy shopping centre with plenty of bars and restaurants to choose from will make this holiday long to be remembered.

## EXCURSIONS

While on this holiday you will enjoy beautiful Excursion(s) which would be confirmed prior to departure. These excursion(s) could be from the following:

**Truro** - Tour to Truro the capital city of Cornwall where you can visit the beautiful Cathedral and the wide variety of shops.

**Falmouth** - Falmouth is a busy seaside town and port on the River Fal on the south coast of Cornwall.

**Padstow** - A coastal drive to beautiful town of Padstow which has a charming working fishing port.



Reception at The Sandy Lodge Hotel

## PRICE INCLUDES

- Accommodation on a half board basis
- Free excursion(s)
- Entertainment most evenings
- Free feeder service
- Luxury executive coach travel



## SANDY LODGE HOTEL

**The Sandy Lodge Hotel in Newquay is an excellent family run hotel based in Cornwall's premier resort.**

Situated close to the seafront of Newquay Bay, the hotel features en-suite bedrooms accompanied by excellent British Homemade Cuisine including our "All you can Eat" Full English Breakfast, Homemade Soups, Great British Roast Dinners and Desserts to die for every day.

A friendly approach to customer service and with entertainment provided most nights you can be assured sure of a great time at one of Newquay's friendliest Hotels. Also the ideal location means that you will only be a few minutes away from the superb Newquay beaches and local shops.

DEPARTURE DATES	DURATION	PRICE PP
17th March 2017 *	4 Days	£139.00
19th May 2017	4 Days	£169.00
23rd June 2017	4 Days	£169.00
26th June 2017	5 Days	£239.00
14th July 2017	4 Days	£179.00
28th July 2017	4 Days	£179.00
18th August 2017	4 Days	£189.00
1st September 2017	4 Days	£179.00
<b>TURKEY &amp; TINSEL</b>		
3rd November 2017 **	4 Days	£169.00
17th November 2017 **	4 Days	£169.00
20th November 2017 **	5 Days	£220.00
4th December 2017 **	5 Days	£220.00
11th December 2017 **	5 Days	£179.00

\* 2 for 1 Bar

\*\* Turkey & Tinsel have Bar Promotions  
No Single Supplement



Sandy Lodge Hotel







# NORTH WALES EXPLORER

## BREATHTAKING SCENERY

**This is an opportunity to see some of the beauties that Wales has to offer.** We will be staying in Criccieth and tour every day to visit some of the most beautiful places that Wales has to offer.

## ON THIS HOLIDAY YOU WILL VISIT THESE BEAUTIFUL DESTINATIONS

**Snowdonia** - Tour the Snowdonia National Park that boasts vast areas of natural beauty and unique scenery. It is known as Eryri by Welsh a name that can be translated as "the place of the eagles". We will also be taking the Snowdon Mountain Railway up to the Snowdon summit.

**Llanberis** - A scenic ride through the Snowdon mountains to the village of Llanberis which lies at the foot of Snowdon and is home to the Welsh slate museum.

**Beddgelert** - Is one of many of Snowdonia's lovely villages. A place of legend, culture and history. The village, in keeping with its location in the Snowdonia National Park, is picturesque and unspoilt.

**Portmeirion** - Portmeirion is a tourist village in Gwynedd, North Wales. It was designed and built by Sir Clough Williams-Ellis between 1925 and 1975 in the style of an Italian village and is now owned by a charitable trust. (Entry into portmeirion not included).

**Porthmadog** - A harbour town situated on the Glaslyn Estuary, Porthmadog is rich in maritime history and it has a number craft shops and restaurants.

In times gone by, it was a vital, busy shipping port for the international slate trade, brought down from Blaenau Ffestiniog. The maritime history depicts its proud past.

## PRICE INCLUDES

- Accommodation on a half board basis
- Train ride on Snowdon Mountain Railway
- Free excursions
- Entertainment most evenings
- Free feeder service
- Luxury executive coach travel



Call Our Booking Office: 01443 710604

## THE LION HOTEL

**The Lion Hotel is situated in the beautiful coastal town of Criccieth on the village green commanding magnificent views of Cardigan Bay.**

The Lion Hotel, offers a unique personal service of friendliness, comfort and true hospitality.

The Lion Hotel - Double Room



### DEPARTURE DATES

### DURATION

### PRICE PP

5th June 2017

5 Days

£289.00

28th August 2017

5 Days

£289.00

No Single Supplement



Lounge & Bar at The Lion Hotel







# SCOTLAND

## DUNOON

**Dunoon is the main resort on the beautiful Cowal Peninsula and the maritime gateway to the Loch Lomond & Trossachs National Park.**

This one of the Firth of Clyde's foremost resorts is built around the historic Castle Mound and famous for its large Victorian pier.

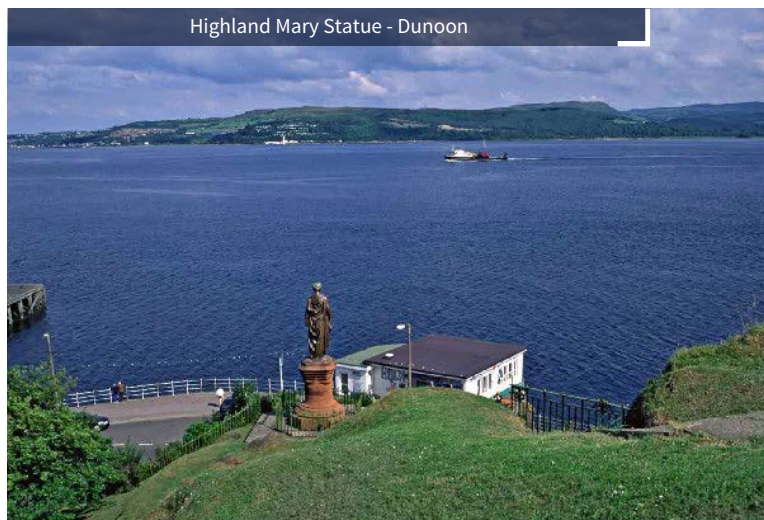
The town has an attractive promenade which offers a museum and leisure centre as well as a fascinating selection of craft shops, galleries, cafés and restaurants.

### ON THIS HOLIDAY YOU WILL ENJOY THESE BEAUTIFUL EXCURSIONS

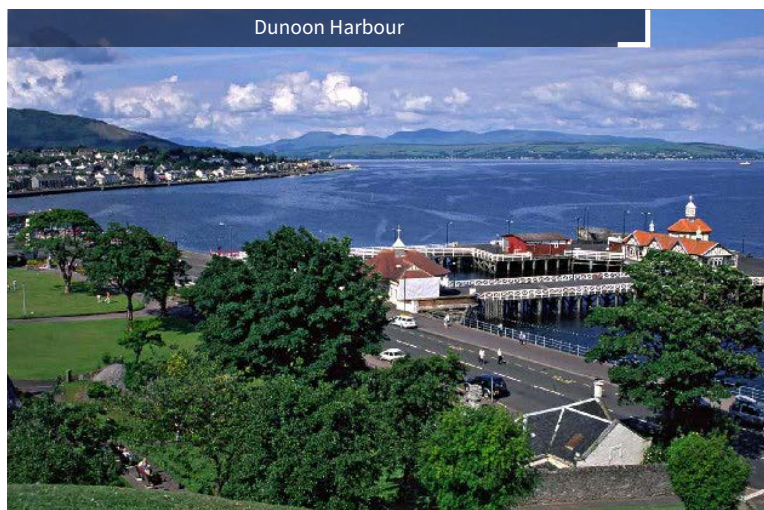
**A half day tour of Dunoon** itself where you will discover that Dunoon is not only beautiful but rich with history and has many sights to be seen.

**A full day excursion** where you tour around loch Lomond the largest of all the loch's in Scotland with a stop at the pretty conservation village of Luss. With its prim, identical sandstone and slate cottages garlanded in rambling roses, and its narrow sandy, pebbly strand, the village became the setting for the successful TV soap High Road.

**Scenic excursion** to the beautiful seaside town of Inveraray which is known as the gateway to the highlands.



Highland Mary Statue - Dunoon



Dunoon Harbour

### PRICE INCLUDES

- Accommodation on a half board basis
- Free excursions
- Entertainment most evenings
- Free feeder service
- Luxury executive coach travel







## THE SELBORNE HOTEL

**Superbly situated looking south across the Clyde with pleasant gardens reaching down to the promenade and almost to the water's edge.**

Located in the seaside town of Dunoon on the Cowal Peninsula, Selborne Hotel offers striking views across the Firth of Clyde. This hotel, a part of the Leisureplex Hotel Group.

Rooms at the Selborne all come equipped with en-suite facilities, a flat-screen Freeview TV, a hairdryer, and tea and coffee making facilities. Each ground-floor public room has stunning views across the bay.

DEPARTURE DATES	DURATION	PRICE PP
9th March 2017	5 Days	£189.00
20th April 2017	5 Days	£189.00
12th October 2017	5 Days	£189.00

Single Supplement Charges Apply



Dunoon



The Selborne Hotel



Dunoon Castle





# SKEGNESS

## THE SEASIDE TOWN

Perched on the 'drier side of Britain', Skegness is a seaside resort that's small enough to offer a friendly atmosphere, but large enough to provide hours of entertainment for young and old alike.

## ON THIS HOLIDAY YOU WILL ENJOY THESE BEAUTIFUL EXCURSIONS

An excursion to the beautiful city of Lincoln, which is built around a beautiful medieval cathedral and Lincoln Castle which houses a Victorian prison.

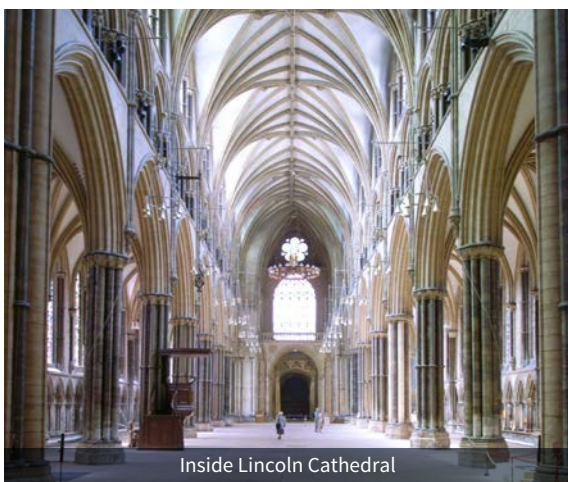
An excursion to the small port town of Boston on market day, which has been running for hundreds of years.

## THE CHATSWORTH HOTEL

Centrally situated in Skegness on the Main Seafront Promenade, The Chatsworth is just a short stroll to many of the major attractions including our award winning beaches, Natureland Seal Sanctuary, The Embassy Theatre and Skegness Pier.

The Chatsworth is acclaimed by their guests for the best of traditional British cooking using quality seasonal produce.

DEPARTURE DATES	DURATION	PRICE PP
15th May 2017	5 Days	£229.00
19th June 2017	5 Days	£229.00
3rd July 2017	5 Days	£249.00
28th August 2017	5 Days	£259.00
11th September 2017	5 Days	£229.00



Inside Lincoln Cathedral

No Single Supplement



The Chatsworth Hotel - Bedrooms

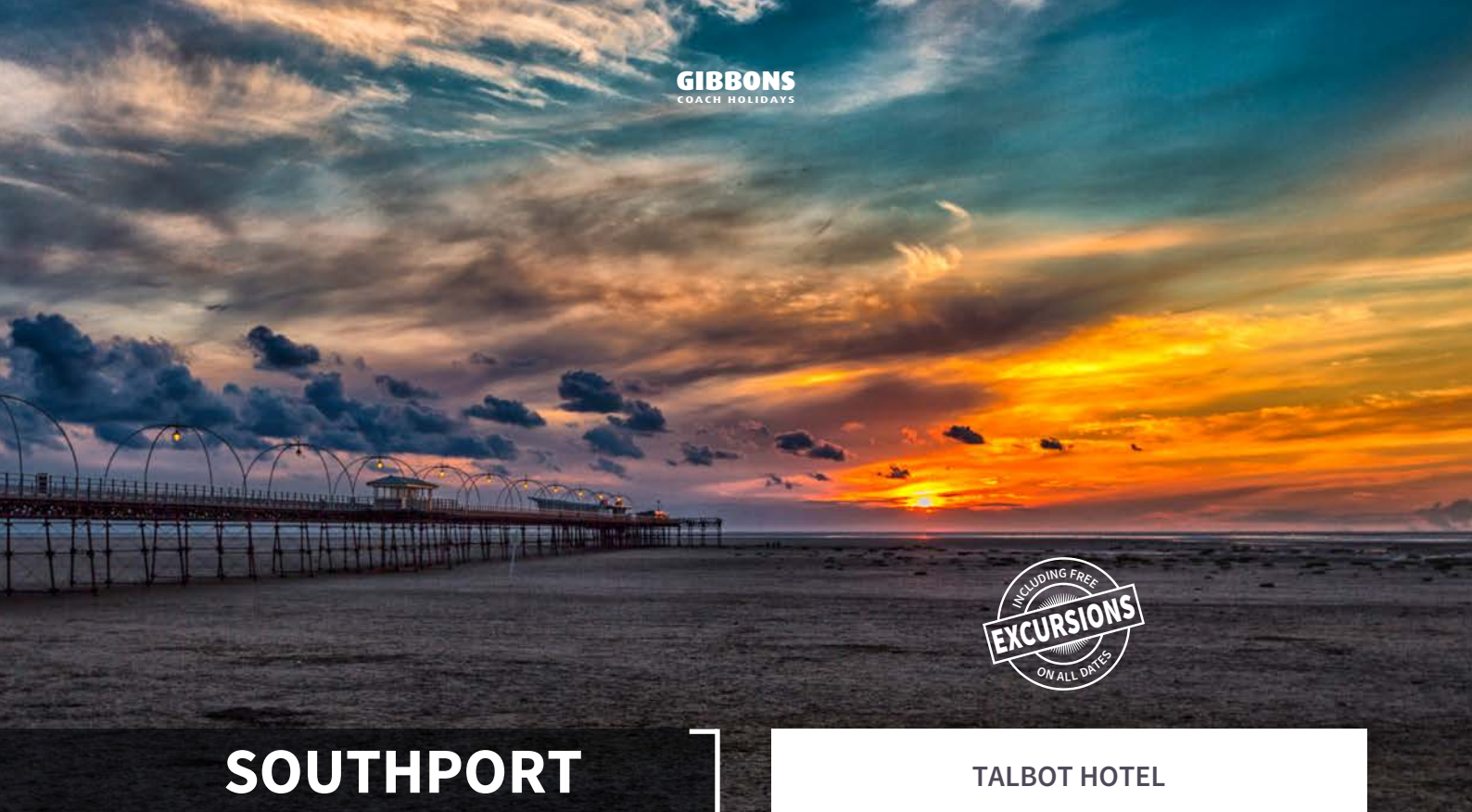
## PRICE INCLUDES

- Accommodation on a half board basis
- Free excursions
- Entertainment most evenings
- Free feeder service
- Luxury executive coach travel



The Chatsworth Hotel





# SOUTHPORT

## A CLASSIC RESORT

**Situated on the west coast between Liverpool and Blackpool. Southport is still one of the most popular holiday resorts in the UK. With the mile long "Lord Street" full of shopping and a lovely seafront with gardens and activities for all ages.**

## EXCURSIONS

While on this holiday you will enjoy beautiful Excursion(s) which would be confirmed prior to departure. These excursion(s) could be from the following:

**Liverpool** - which is known worldwide as the birth place of the Beatles. Liverpool has many attractions to be visited from museums to Cathedrals Liverpool has it all.

**Blackpool** - Britain's favourite seaside resort with loads of great attractions you will never be bored. Thrill-seekers can brave the white-knuckle rides of the Pleasure beach or relax with some serious retail therapy, with a trip to Blackpool's indoor shopping centre.

**Ormskirk Market** - one of the country's oldest and most traditional street markets. Ormskirk's open-air market is held in the pedestrianised streets around the famous clock tower.



Lord Street - One Mile of Shops

## PRICE INCLUDES

- Accommodation on a half board basis
- Free excursion(s)
- Entertainment most evenings
- Free feeder service
- Luxury executive coach travel



## TALBOT HOTEL

**The Family run Talbot Hotel is situated between the main shopping area of Eastbank Street and the tree lined boulevards of Lord Street.**

The genuine hospitality, attention to detail, exceptional dining, superb entertainment and function facilities, combined with the ideal seaside location makes this an ideal choice for a break away.

Please note: There is no lift at this hotel and rooms start from the first floor. Also single rooms are en-suite but have a shared shower facility for which you will have a key issued to you for the duration of your stay.

DEPARTURE DATES	DURATION	PRICE PP
29th January 2017	5 Days	£129.00
24th March 2017	5 Days	£149.00
23rd April 2017	5 Days	£179.00
14th May 2017	5 Days	£189.00
30th June 2017	4 Days	£169.00
6th August 2017	5 Days	£220.00
17th September 2017	6 Days	£239.00
15th October 2017	6 Days	£199.00
<b>TURKEY &amp; TINSEL</b>		
3rd December 2017	5 Days	£189.00

**No Single Supplement**

**No Lift or Ground Floor Rooms Available at this Hotel**



The Talbot Hotel





# ST IVES

## THE ARTIST'S HAVEN

**Widely regarded as the jewel of Cornwall's crown, a beautiful seaside town, set in breath taking coastal scenery** - whatever the time of year or day, St Ives gives something special to every visitor that will make you want to return again and again.

## EXCURSIONS

While on this holiday you will enjoy beautiful Excursion(s) which would be confirmed prior to departure. These excursion(s) could be from the following:

**Falmouth** - A large coastal town which has a fascinating maritime heritage, Falmouth is building a name for itself as one of the South West's leading cultural and festival destinations.

**Truro** - Not only is Truro regarded as the capital of Cornwall it is also known as Cornwall's retail centre, so you can shop until you drop.



St Ives

## PRICE INCLUDES

- Accommodation on a half board basis
- Free excursion(s)
- Entertainment most evenings
- Free feeder service
- Luxury executive coach travel



## THE ST MERRYN HOTEL

**This superb family run hotel with spacious grounds and gardens is just off the main road overlooking St. Ives bay.**

It is tastefully furnished and serves excellent home cooked food, always prepared and served with care. Overlooking the lawns and sea, it's comfortable bars and lounge make the perfect spot for relaxing.

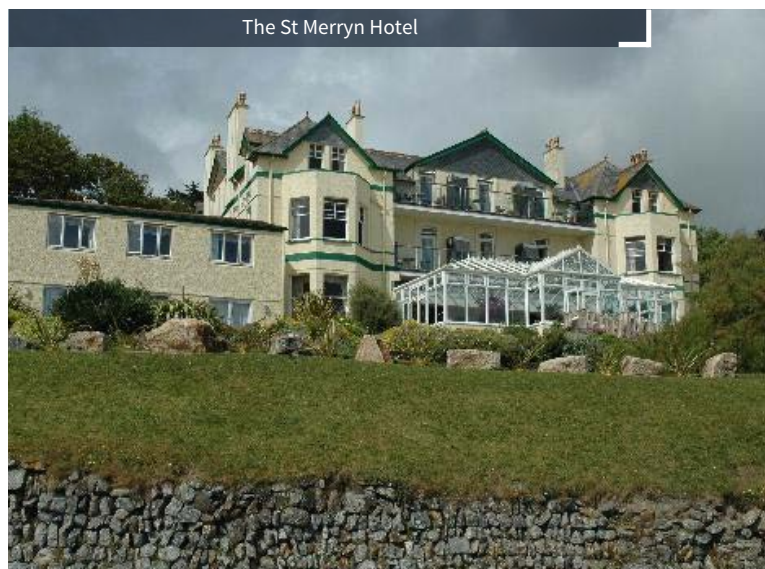
**Please Note:** There is no lift available at this hotel.

DEPARTURE DATES	DURATION	PRICE PP
8th May 2017	5 Days	£239.00
25th July 2017	5 Days	£259.00
11th September 2017	5 Days	£239.00
23rd October 2017	5 Days	£220.00
<b>TURKEY &amp; TINSEL</b>		
13th November 2017	5 Days	£189.00
11th December 2017	5 Days	£169.00

No Single Supplement



The St Merryn Hotel







# TORQUAY

## THE ENGLISH RIVIERA

Regarded as the English Riviera the busy harbour and international marina could fool you into thinking you were on the Mediterranean.

Enjoy long leisurely walks along the pier and promenade and take in the relaxed atmosphere. Make time to walk up the steps of Royal Terrace Gardens and take in the amazing sea views across the bay which are magnificent especially at night, with the lights reflecting onto the sea.

## EXCURSIONS

While on this holiday you will enjoy beautiful Excursion(s) which would be confirmed prior to departure. These excursion(s) could be from the following:

**Exeter** - The beautiful city of Exeter, which is great for shopping and well known for its beautiful Cathedral.

**Paignton** - Which is also known as a part of the English Riviera.

**Buckfast Abbey** - The monks of Buckfast welcome visitors to their famous abbey. At Buckfast, visitors can see the great Abbey church with its many art treasures, rebuilt on its medieval foundations by the monks themselves

**Brixham** - Another part of the English Riviera located on the southern aspect of Tor Bay and boasts one of the largest fishing fleets in the UK, plus a thriving fish market to support it.

**Please Note:** On 4 day holidays there will 1 excursion, 5 days there will be 2 excursions, 6-8 days there will be three excursions.



The Rainbow International - Carvery

## PRICE INCLUDES

- Accommodation on a half board basis
- Free excursion(s)
- Entertainment most evenings
- Free feeder service
- Luxury executive coach travel



## THE RAINBOW INTERNATIONAL

The Rainbow International Hotel resort in the heart of Torquay, opposite the Riviera Centre on the sunny English Riviera. The Rainbow International Hotel is the perfect place to enjoy fabulous food, a wide range of comfortable bedrooms, cabaret entertainment, superb indoor pool.

Situated just a few minutes' walk from Torquay's award winning beaches, sparkling blue sea and all that Torquay has to offer.

DEPARTURE DATES	DURATION	PRICE PP
23rd January 2017 *	5 Days	£99.00
20th February 2017 *	5 Days	£119.00
27th March 2017	5 Days	£149.00
3rd March 2017	4 Days	£139.00
10th April 2017	5 Days	£179.00
28th April 2017	4 Days	£169.00
26th June 2017	5 Days	£239.00
30th June 2017	4 Days	£189.00
17th July 2017	5 Days	£239.00
4th September 2017	5 Days	£220.00
2nd October 2017	5 Days	£199.00
20th October 2017	4 Days	£169.00
<b>TURKEY &amp; TINSEL</b>		
6th November 2017	5 Days	£189.00
24th November 2017	4 Days	£169.00
11th December 2017	5 Days	£149.00

\* 99p Bar Promotion for 3 Hours Per Night

No Single Supplement



The Rainbow International - Ballroom







# WEYMOUTH

## A FAVOURITE SEASIDE RESORT

As one of the UK's most beautiful seaside resorts, and blessed with one of its sunniest and warmest climates, Weymouth offers a huge amount of activities and attractions to offer people of all ages.

### EXCURSIONS

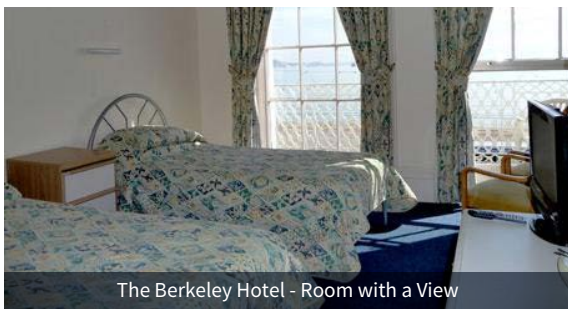
While on this holiday you will enjoy beautiful Excursion(s) which would be confirmed prior to departure. These excursion(s) could be from the following:

**Poole** - the seaside town has plenty to see and do from shopping to visiting the potteries where you can see the skilled craftsmen at work.

**Swanage** - the pretty seaside town where it has its very own working steam train station which is a must see.

**Bournemouth** - boasting miles of golden sands and sparkling sea, the vibrant cosmopolitan town of Bournemouth has it all from award winning gardens to a busy shopping centre.

**Dorchester market** - A very popular weekly market in the historic county town of Dorchester.



The Berkeley Hotel - Room with a View



### PRICE INCLUDES

- Accommodation on a half board basis
- Free excursion(s)
- Entertainment most evenings
- Free feeder service
- Luxury executive coach travel



## THE BERKELEY HOTEL

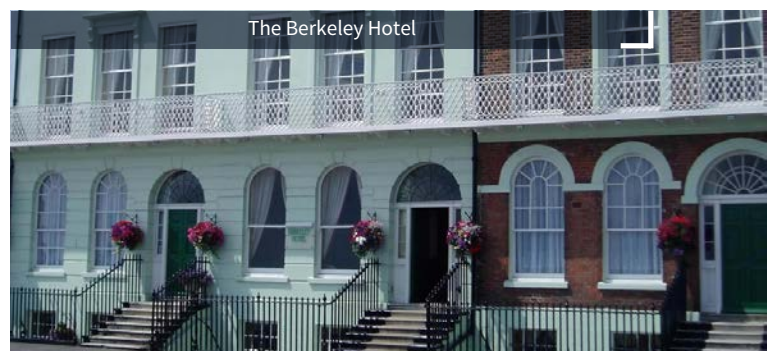
The Berkeley hotel is a one of our more popular hotels which has a fantastic location on the sea front close to the town centre.

The hotel has a very friendly atmosphere, serves excellent food and entertainment most nights.

Situated just across from the impressive promenade and beach, the hotel forms part of Weymouth's historic Georgian terraced sea front.

DEPARTURE DATES	DURATION	PRICE PP
3rd March 2017	4 Days	£139.00
6th March 2017	5 Days	£169.00
24th March 2017	4 Days	£139.00
3rd April 2017	5 Days	£189.00
14th April 2017 (Easter)	4 Days	£179.00
27th May 2017	8 Days	£320.00
19th June 2017	5 Days	£239.00
29th July 2017	8 Days	£379.00
21st August 2017	6 Days	£320.00
22nd September 2017	4 Days	£179.00
2nd October 2017	5 Days	£220.00
20th October 2017	4 Days	£169.00
<b>TURKEY &amp; TINSEL</b>		
17th November 2017	4 Days	£179.00
24th November 2017	4 Days	£179.00
27th November 2017	5 Days	£220.00
<b>CHRISTMAS</b>		
23rd December 2017	5 Days	£399.00
<b>NEW YEAR</b>		
30th December 2017	4 Days	£299.00

Single Supplement Charges Apply



The Berkeley Hotel





# YORKSHIRE EXPLORER

## TOURS THROUGHOUT YORKSHIRE

**A tour around the beautiful county of Yorkshire.** Using Scarborough as our base you will visit the likes of Goathland (Heartbeat location), Whitby, The Eden camp (German POW camp), Castle Howard and also the beautiful city of York.

## ON THIS HOLIDAY YOU WILL VISIT THESE BEAUTIFUL DESTINATIONS

**Goathland** - This village has attracted visitors since the 19th century, but numbers soared following its appearance (as 'Aidensfield') in the television series 'Heartbeat' and its role in the 'Harry Potter' films. While you are at Goathland you will board a 1950s steam train to Whitby.

**Whitby** - Whitby town is an ancient and beautiful sea port, surrounded by the magnificent countryside of the North York Moors National Park.

**Eden Camp** - Is a second world war prisoner of war camp which has opened to the public in 1987 and has been help transport people back to what life was like during WWII.

**Castle Howard** - A magnificent 18th century residence set within 1,000 acres of breathtaking landscape in the Howardian Hills, an Area of Outstanding Natural Beauty in the heart of North Yorkshire.

**York** - Rich in ancient history, romantic ambience and fun activities, York is renowned for its exquisite architecture, tangle of quaint cobbled streets, iconic York Minster and wealth of visitor attractions, York is a flourishing city.



Castle Howard

### PRICE INCLUDES

- Accommodation on a half board basis
- Steam Train ride from Goathland to Whitby
- Free excursions
- Entertainment most evenings
- Free feeder service
- Luxury executive coach travel



Call Our Booking Office: **01443 710604**

## THE DELMONT HOTEL

**This Delmont Hotel is Just a 2 minute's walk from the beach.**

With splendid views over Scarborough's North Bay, this family-run hotel is also situated minutes from the lively town centre.

The Delmont Hotel's traditional dining room serves great food and holds regular evening entertainment.



Whitby Harbour

DEPARTURE DATES	DURATION	PRICE PP
12th June 2017	5 Days	£289.00
10th July 2017	5 Days	£289.00
14th August 2017	5 Days	£289.00

**No Single Supplement**



The Delmont Hotel - Double Room



The Delmont Hotel and Lounge





# YORKSHIRE TELEVISION EXPERIENCE

## FILM AND TELEVISION

Over the years, the spectacular landscapes of Pennine Yorkshire have been home and inspiration to literary legends such as the Brontë and Ted Hughes, and have become familiar to millions through the many film and television dramas that have been filmed on location here.

Based in Bradford city centre, this programme focuses on the same rich and varied scenery that inspired authors, Poets and playwrights for centuries.

## ON THIS HOLIDAY YOU WILL ENJOY THESE FANTASTIC EXCURSIONS

**Calendar Girls Guided Tour** - Spend the day touring the fantastic scenery that Featured in the movie Calendar Girls, as well as learning the stories of the actual women that inspired the movie which starring Helen Mirren and Julie Walters.

**The Woolpack** -This lovely traditional country pub has to be the most famous 'working' pub in the country, as it is the original Emmerdale Woolpack and the only 'soap' pub where you can actually get a drink.

**Brontë Parsonage Museum** - The famous Brontë Parsonage Museum in the picturesque village of Haworth in West Yorkshire. The Brontë collections at the Brontë Parsonage Museum are the largest and most important in the world and continue to inspire scholars, writers and artists.

**Harewood House** - Guided tour of Harewood House Which feature on the ITV series Victoria. This is an opportunity to explore the Victorian era through the eyes of three prominent women; Lady Louisa, 3rd Countess of Harewood, Lady Charlotte Canning and Queen Victoria herself.

**Vintage Steam Train Ride** - Enjoy a beautiful steam train ride on the Keighley and Worth Valley Railway.

**Summer wine heritage tour** - A guided tour by vintage bus around the film locations used in the filming of the World record breaking BBC comedy "The Last Of The Summer Wine" it incorporates some of the most beautiful scenery found in the foothills of the Yorkshire Pennines. As well as getting an insight into the filming, there is a full running commentary on the history of the local area. Starting from outside the famous "Sids Café" in the centre of Holmfirth.



The Great Victoria Hotel



Best Western Cedar Court Hotel Bradford

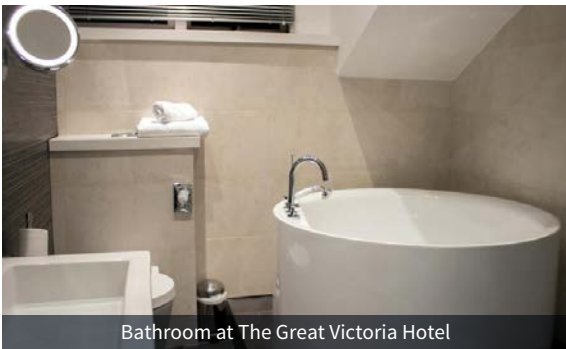




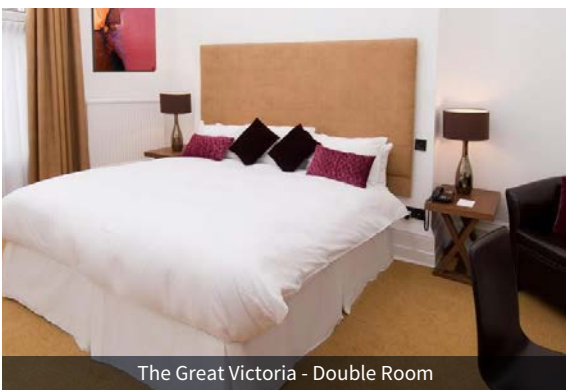
## THE GREAT VICTORIA HOTEL

**The Great Victoria Boutique Hotel is a landmark Victorian building, This hotel is within walking distance of theatres and the National Media Museum.**

Each of the 70 stylish and individually designed rooms comes complete with a flat-screen TV and a 2-line telephone. The bathrooms have bespoke toiletries.



Bathroom at The Great Victoria Hotel



The Great Victoria - Double Room

### PRICE INCLUDES

- Accommodation on a half board basis
- Free excursions
- Free feeder service
- Luxury executive coach travel



## BEST WESTERN CEDAR COURT HOTEL

**The Best Western Cedar Court offers an in-door heated pool, a sauna and a gym.**

As well as modern rooms all featuring an en suite bathroom, a TV and tea/coffee making facilities. A four-star service & facilities guarantee a comfortable, relaxing & enjoyable stay.

DEPARTURE DATES	DURATION	PRICE PP
10th April 2017	5 Days	£289.00
8th May 2017	5 Days	£289.00
1st August 2017	5 Days	£289.00
10th September 2017	5 Days	£289.00
1st October 2017	5 Days	£289.00

Single Supplement Charges Apply



Cedar Court Leisure Pool



Cedar Court Hotel - Double Room



## CHRISTMAS 2017

### SPEND CHRISTMAS WITH GIBBONS

**Spend Christmas with Gibbons Holidays at one of our exclusively selected destinations.**

Enjoy a Full Christmas Programme including Bed & Breakfast and Evening Meal. Entertainment every night.



DEPARTURE DATES	DESTINATION & HOTEL	DURATION	PRICE PP
23rd December 2017	Isle of wight - Hotel Maria	6 Days	£399.00
23rd December 2017	Weymouth - The Berkeley hotel	5 Days	£389.00
23rd December 2017	Newquay - The Pentire Hotel	5 Days	£389.00

## NEW YEAR 2018

### CELEBRATE 2018 WITH GIBBONS

**Celebrate New Year with Gibbons Holidays at one of our exclusively selected destinations.**

Enjoy all your Party Fun including Bed & Breakfast and Evening Meal. Entertainment every night.



Enjoy New Year at The Risboro Hotel

DEPARTURE DATES	DESTINATION & HOTEL	DURATION	PRICE PP
29th December 2017	Isle of wight - Hotel Maria	5 Days	£299.00
30th December 2017	Weymouth - The Berkeley hotel	4 Days	£289.00
30th December 2017	Llandudno - The Risboro	4 Days	£329.00
30th December 2017	Newquay - The Pentire Hotel	4 Days	£289.00

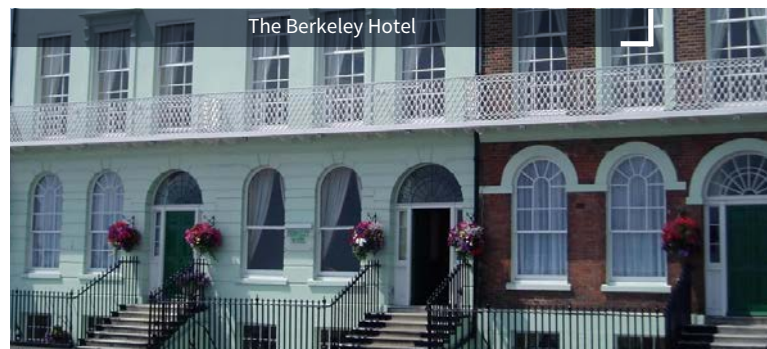
**Book Now to Avoid Disappointment**

### PRICE INCLUDES

- Accommodation on a half board basis
- Free excursion(s)
- Entertainment every night
- Free feeder service
- Luxury executive coach travel



The Berkeley Hotel





# HOTEL

**GIBBONS**  
COACH HOLIDAYS

A Warm Welcome at The Pentire Hotel

## THE PENTIRE HOTEL

**Just a stone's throw from Fistral Beach and with stunning views out across the Atlantic, you couldn't ask for a better location than right here at the Pentire.**

Sandwiched between Britain's most famous surf beach and the serene Gannel Estuary, it's not only perfect for that quintessential seaside break, it's also the ideal place from which to explore Cornwall.

The bright and airy bedrooms at Pentire each have a private modern bathroom with toiletries and a hairdryer. All rooms feature tea/coffee facilities and a TV, and some have sea views.

The Pentire's Leisure Centre features an indoor heated swimming pool. Guests can relax in the steam room, or in the leafy gardens and spacious sun terrace. The traditional restaurant serves a varied menu, featuring quality local produce and fresh seafood.



Relax in The Pentire Bar this Christmas

## THE BERKELEY HOTEL

**The Berkeley hotel is a one of our more popular hotels which has a fantastic location on the sea front close to the town centre.**

The hotel has a very friendly atmosphere, serves excellent food and entertainment most nights.

Situated just across from the impressive promenade and beach, the hotel forms part of Weymouth's historic Georgian terraced sea front.

Cosy Sea Views from The Berkeley Hotel this Winter



## THE RISBORO HOTEL

**The Risboro Hotel is an independent family run hotel, which is situated in the centre of Llandudno just off the sea front.**

The Risboro has great entertainment that is all organised by their resident entertainers. The Risboro aims to give you the best provide some of the best cabaret to be found in Wales.

Mark and Mike present their amazing costume medley twice weekly and the 'hostess with the mostess' Miss Crystal Bawls regularly oversees some late night hilarity!

The large basement ballroom is fully equipped with bar, stage, sound and lighting systems to host a variety of Cabaret acts.



Start the New Year enjoying The Risboro Hotel Facilities

## THE HOTEL MARIA

**The Hotel Maria is a warm and friendly hotel situated right on Sandown seafont. With a beautiful sandy beach on its doorstep, it is close to all Sandown's amenities.**

The hotel has views over the bay, resulting in light, airy accommodation. Hotel has en-suite bedrooms, tea/coffee making facilities, TV, public telephone and internal telephones.

The large, modern Bay Vista Lounge has both a well-stocked bar and a dance floor that can be enjoyed on most evenings.

An ideal Festive stay at The Hotel Maria





# OUR TRADING CHARTER WITH YOU

## 1. Does this Trading Charter Apply to My Booking?

Yes, if you are booking a "package" to which the Package Travel, Package Holidays and Package Tours Regulations 1992 apply and which does not comprise a flight, but not otherwise.

In brief, those Regulations apply to a booking of at least two of the following components when sold or offered for sale at an inclusive price and when the service covers a period of more than twenty-four hours or includes overnight accommodation:-

- transport,
- accommodation,
- other tourist services not ancillary to transport or accommodation and accounting for a significant proportion of the package.

## 2. Why should I read this?

Because it is very important. Our Trading Charter forms a key part of our agreement with you because it not only comprises the booking terms and conditions for the booking of your package, but also the Consumer Guarantee (described below) from The Bonded Coach Holidays Group ("BCH Group"), part of the Confederation of Passenger Transport UK, providing protection for the money you pay to us for the booking should we go out of business. Both the booking terms and conditions and the Consumer Guarantee, together with the confirmation of booking we give you at the time we commit to your booking for you, together make up the legally binding contract between you as the lead name making the booking, anyone else in your party and us.

When you make this booking as the lead name you undertake that you are 18 and have the authority to accept, and do accept, on behalf of your party the terms of this Trading Charter. This contract is made subject to the terms of this Trading Charter, which are governed by English Law, and the non-exclusive jurisdiction of the English Courts. However, if you are resident in Scotland or Northern Ireland, you are able to choose the law and courts in your country, but if you wish to do so we would ask you to request this before placing your booking.

This Trading Charter and the Consumer Guarantee will not apply to any booking involving any type of flight. Instead, if you are booking a holiday which includes a flight, you will be supplied with the full booking conditions of the ATOL holder arranging your holiday with whom you have a contract. Your booking agent will have a copy or alternatively you can request one prior to booking your holiday from.

## 3. How and when do I make this contract with you?

We welcome you making contact with us in a number of ways. You can write to us, phone us, use a travel or booking agent, email, or visit our website. Whichever way you contact us, the contract is made when your booking is entered on to our reservation system and we issue a confirmation of booking. We will send you, or your booking agent the confirmation of your booking within 4 working days. Please check this confirmation very carefully to ensure all the information is correct and tell us, or your agent, immediately of any errors.

## 4. How is my money for the package I book protected?

Your money is protected by the Consumer Guarantee described below and provided to you by the BCH Group.

This is possible because we subscribe to the Code of Conduct of the BCH Group, which requires us to take out a bond from a financial entity in favour of the BCH Group for it to use to provide protection for your package money in the unlikely event that, for financial reasons, we can't carry out our booking obligations to you.

## 5. BCH Group Consumer Guarantee

The Bonded Coach Holiday Group guarantees to you that in the event of our failure through insolvency to provide your package as booked, BCH Group will:

- 5.1. wherever possible, arrange for your package to be completed;
- 5.2. where failure occurs after your package has begun, arrange for you and those in your party covered by the booking to be returned by an appropriate means of transport to their UK area of departure;
- 5.3. if the package cannot be completed as booked, to reimburse your booking- payments received by us, provided that BCH Group will first take in to account and withhold an appropriate amount if any part of the service has already been provided (including any substituted service) or you are entitled to a refund from your credit card provider.

In the event that you are to be reimbursed under the BCH Group consumer guarantee, you will be asked to assign absolutely to BCH Group any right, claim or cause of action which you may have arising out of or connected with the subject matter and will be asked to assist BCH Group in any claim brought by them connected with the subject matter.

## 6. Payments by Credit Card

If you made payment for the booking of any services using a credit card it is likely in many circumstances that you have recourse against the credit card company in the event of services not being supplied in whole or in part due to the supplier's financial failure. In those circumstances, you will be advised to check that you have exhausted your remedies against the credit card company.

## 7. When do I need to pay for my package and how much?

We reserve the right to alter the prices of any of the packages that we advertise. At the time of booking you will be told the current price of the package. You can book by paying a deposit for each person named on the booking. You will be told at what point in time you will become committed to a booking, but we are not committed to the booking until such time as we provide you with our confirmation of booking. Our commitment is always conditional upon any balance being paid before the dates listed below.

If you book within our balance due period you will need to pay the total package cost at the time of your booking.

If you do not pay the outstanding balance for your package on or before the date when it is due we may cancel your booking and you will be required to pay the cancellation charges detailed below. The date of cancellation will normally be the date on which we receive your written confirmation that you intend to cancel or 15 days after the balance due date, whichever comes first.

Deposit £30.00 per person.

Your balance is due 6 weeks prior to departure

Where optional items are purchased as part of the package these are payable on the balance due date except where items, such as theatre tickets, have been specifically purchased for you. In this case the cost will be payable at a separate date notified to you and will not normally be refundable unless we obtain a refund from the supplier we use.

## 8. If I use an agent who does my money belong to?

Your agent will hold your deposit on your behalf until we issue a confirmation of your booking, which confirms there is a contract between us. The agent then holds this money on our behalf. The agent holds the balance you pay on our behalf until the date the balance is due. The agent will then forward to us.

## 9. Can you change the price of my package after you have issued the booking confirmation?

Yes we can, but only in very limited circumstances and not within 30 days of your departure. The price of your package can be varied due to changes in:-

- Transportation costs such as fuel and/or fuel tax, ferry operator fares and tolls, embarkation or disembarkation fees at terminals;
- Exchange rates applied to the particular package booked; or
- Dues and taxes including changes in VAT or any other Government imposed charges.

In the case of any variation described above, an amount equivalent to 2% of the price of your package, which excludes insurance premiums and any amendment charges, will be absorbed. An administration fee of £1 per person will be paid by you. If this means that you would have to pay an increase of more than 10% of the price of your package before increase, you may cancel it and receive a full refund of all monies paid, except for any amendment charges. We will consider an appropriate refund of insurance premiums paid if you can show that you are unable to transfer or reuse your policy.

Should you decide to cancel for this reason, you must exercise your right to do so within 14 days from the issue date printed on your revised invoice. Alternatively, you can accept an offer of an alternative comparable package of equivalent or superior quality, if available, or an alternative package of lower quality, if available. You may then transfer payment made in respect of the original package to the alternative package. If the cost of the alternative package is less than the original package, the difference in price will be refunded.

We will also pay compensation as set out below. Please note that travel arrangements are not always purchased in local currency and some apparent changes have no impact on the price of your package due to contractual and other protection in place.

## 10. Can I change my package arrangements?

After we have issued our booking confirmation we will do our best to accommodate any changes you may want to make but we cannot guarantee to do so. Any changes must be notified to us in writing and signed by the person who signed the booking form. Some arrangements, like particular types of tickets, cannot be changed without paying a cancellation charge of up to 100% of the cost of the ticket.



**11. Can I transfer my booking to someone else?**

You can transfer your booking to someone else provided you give us reasonable notice. This person must be able to satisfy all the conditions for the package and a change cannot normally be made later than seven days prior to departure. You will remain responsible for ensuring that the package is paid for by the balance due date. This is in addition to (and does not affect) the separate liability of the transferee to us.

**12. How can I cancel my package?**

You, or any member of your party, may cancel at any time provided that the cancellation is made by the person in whose name we issued the confirmation of booking and is communicated to us in writing via the office at which you made your original booking. You will have to pay cancellation charges set out in the scale below to cover our estimated loss resulting from the cancellation.

If you are insured against cancellation you may be able to recover the charges from your insurers. Your cancellation will take effect from the date when either the travel agent or we receive your written confirmation of your cancellation. You must also return any tickets or vouchers that you have received. A reduction in room occupancy may increase the charges for the remaining passengers by the application of supplements for low occupancy of rooms.

**13. Scale of Cancellation Charges**

Period before departure within which written cancellation of package price is received	Amount of cancellation Charge as a % of total package cost
More than 42 Days	Deposit only
29 to 42 Days	30% or Deposit, if greater
15 to 28 Days	45%
8 to 14 Days	60%
0 to 7 Days	100%

**14. What happens if you change my package?**

The arrangements for your package will usually have been made many months in advance. Sometimes changes are unavoidable and we reserve the right to make them at any time. Most of these changes are likely to be minor and we will do our best to keep you or your booking agent informed.

If, after booking and before departure, we make a significant change to your package you will have the option of withdrawing from the package without penalty or alternatively you may transfer to another package without paying an administration fee. In either case we will pay you compensation according to the scale set out below.

A significant change includes a change in departure time or return time of more than 12 hours, a change of departure point, location of resort or type of hotel, (excluding single overnight hotels on touring packages where the quality of the hotel is comparable), a change of mode when crossing the Channel, or the specification of the coach.

If you withdraw from the package because we have made a significant change or if we have to cancel your package for any reason other than non-payment by you we will offer you the choice of:

- A comparable replacement package if available; or
- a replacement package of lower quality together with a refund of the price difference; or
- a full refund of the money you have paid.

When we have notified you of the changes and options available, you must tell us your decision as soon as possible and within any timescale we may set bearing in mind the need to safeguard the booking arrangements of other customers.

**15. Scale of Compensation**

We will pay you compensation for significant changes on the following scale:

Period before departure in which significant change is notified to you or your agent	Amount per person
More than 42 Days	Nil
29 to 42 Days	Nil
15 to 28 Days	Nil
8 to 14 Days	Nil
0 to 7 days	£25

Payment of compensation according to the scale set out above will not affect your statutory right to claim further compensation if, in all the circumstances, you remain dissatisfied.

If, prior to departure, we make a significant change to your package arrangements or cancel your package we will pay you compensation on the above scale unless:-

- the package is cancelled because the number of persons who agreed to take it is less than the minimum number required, and you were informed of the cancellation in writing or where the performance of our contractual obligations is prevented or affected (for example but not limited to delay, cancellations, change of itinerary, change of accommodation, change of transport) by "Force Majeure".

Force Majeure means an event which we or the supplier(s) of the service(s) in question could not, even with all due care, foresee or avoid and is therefore an event beyond our or the supplier's reasonable control. These events include but are not limited to strikes, riots, political/civil unrest, government acts, hostilities, war, threat of war, terrorist activity or threat of terrorist activity, industrial disputes, natural or nuclear disaster, fire, flood, tornadoes, hurricanes, transportation problems, airport closures, and severe weather conditions. We suggest that you take out adequate travel insurance to cover such eventualities.

[In the unlikely event that the performance of our contractual obligations are prevented or affected due to Force Majeure after departure, we regret we will be unable to make any refunds (unless we obtain any from our suppliers)]

Advice from the Foreign Office to avoid or leave a particular country may constitute Force Majeure. We will follow the advice given by the Foreign Office.

Payment of compensation according to the scale set out above will not affect your statutory right to claim further compensation if, in all the circumstances, you remain dissatisfied.

If, after departure, we need to make a change to a significant proportion of your package we will do our best to make suitable alternative arrangements at no extra cost to you. If it proves impossible to make suitable alternative arrangements, or if you have reasonable grounds for refusing the alternative offered, we will arrange transport back to your point of departure, or to an alternative location that we agree to, Unless the change is as a result of unusual and unforeseeable circumstances beyond our control (force majeure as described above), you will also be entitled to compensation.

**16. What is the extent of our liability?**

Your package contract with us will be performed or provided with reasonable skill and care. We accept responsibility if you or customers named in the booking suffer death or personal injury, or the contractual arrangements are not provided as promised as a result of the failure of us or our agents or suppliers or the employees of each whilst acting in the course of their employment unless the failure or improper performance is due to:-

- you, or
- any of the following:
  - a third party unconnected with the provision of the travel arrangements, or
  - unusual and unforeseeable circumstances beyond our control, the consequences of which could not have been avoided even if all due care had been exercised, or
  - an event which we or our suppliers, even with all due care, could not foresee or forestall

Provided that in these 3 events we would still endeavour to give prompt assistance if you are in difficulty and, if you inform us that you don't believe you have received the contracted service, we will make prompt efforts to find appropriate solutions.

For claims which involve death or personal injury we do not impose any restriction upon our liability to the extent that it arises from our negligence.

For all other claims which do not involve personal injury or death:

- the most we will have to pay if we are liable to you is twice the price you've paid for your package (not including insurance premiums and amendment charges).
- Our liability will also be limited in accordance with/or in line with all relevant international conventions.

The above suppliers (such as accommodation or transport providers) have their own booking conditions or conditions of carriage, and these conditions may limit or remove the relevant transport provider's or other supplier's liability. You can get copies of such conditions from our offices, or the offices of the relevant supplier. We will pay you in accordance with these conditions which are incorporated into the Trading Charter.

If we make any payment to you or any member of your party for death or personal injury or illness, you will be asked to assign to us or our insurers the rights you may have to take action against the person or organisation responsible for causing the death, personal injury or illness. NB: this clause does not apply to any separate contracts that you may enter into for excursions or activities during or outside of your package.



## 17. What do I need to do if I have to complain?

If you have a complaint during your package you should tell the driver/representative or supplier at the earliest opportunity so that they can do their utmost to resolve the problem immediately. If they are unable to resolve the problem to your satisfaction you should complete a Holiday Report Form which is available from the driver/representative. You will be given a copy of this report which you should keep. If, on your return from your package, you remain dissatisfied you should write within 28 days to Gibbons Holidays, 17 Upper High Street, Bedlinog, CH46 6RY.

In your letter you will need to quote your booking reference number, holiday number, departure date and the number of the Holiday Report Form [or alternative method of identifying the form] which you completed at the time.

If you do not tell us at the earliest opportunity about a problem giving rise to your complaint we cannot take steps to investigate and rectify it at the time. We will take into account the date you first drew the problem to the attention of our driver/representative or supplier when responding to your complaint and it may affect your rights under this Trading Charter if we have not been able to investigate and remedy the situation at the time.

The Confederation of Passenger Transport UK has an arbitration scheme and full details are available from them. This scheme does not apply to claims that arise mainly in respect of physical injury or illness or the consequences of any illness or injury.

## 18. Children's reduction

On all centred packages a variable price reduction is available for children aged 2 to 12 inclusive when the child/children share a room with two full fare paying passengers.

## 19. Our Coaches

We will always use our reasonable endeavours to provide a coach to the specification as described in our brochure or advertisement but reserve the right to substitute an alternative vehicle should unforeseen circumstances arise. There is a seating plan of the coach for each package, but it is possible that on occasions operational reasons will require a coach with a different configuration to be used. We therefore reserve the right to alter a coach-seating plan and allocate seats other than those you have booked.

Requests for particular seats can be made on most packages when booking but because allocations are made on a first come, first served basis you are recommended to book early. When your booking is confirmed you will be offered the best seats that are available at that time. If you know someone who may want to book later but sit near you please discuss this with the booking clerk at the time you make your booking.

Specific seats will not be allocated on coaches which operate on feeder services between joining points and main package departure points or on coaches which carry out transfers to and from seaports, airports etc.

## 20. Hotel Facilities

Some hotel facilities, such as indoor or outdoor swimming pools or leisure facilities may from time to time be withdrawn for routine maintenance or be subject to seasonal availability. The provision of these facilities is therefore not guaranteed.

## 21. Health & Safety during your package

In some foreign countries, standards of infrastructure, safety and hygiene may be lower than those to which we are accustomed in the UK. You should therefore exercise greater care for your own protection. Further information can be obtained from your GP or from your travel agent who can provide you with the leaflet "Health Advice for Travellers" published by the Department of Health. Some people may be at risk from discomfort or deep vein thrombosis (DVT) if they remain immobile on a journey for a long period of time.

If you are planning to undertake a bus or coach journey of more than 3 hours you should consult your doctor if you have ever had DVT or pulmonary embolism, a family history of clotting conditions, cancer or treatment for cancer, a stroke, heart or lung disease or if you have had major surgery in the past 3 months.

We reserve the right to refuse any booking in the absence of a doctor's certificate confirming that you are fit to travel. During the journey we will provide comfort stops as frequently as possible. During these stops you are encouraged to get off the coach and walk around. Exercise reduces any discomfort which may be caused by periods of immobility. During any journey you should drink alcohol only in moderation as it leads to dehydration.

## 22. Passenger behaviour

We want all our customers to have a happy and carefree holiday. But you must remember that you are responsible for your behaviour and the effect it may have on others. If you or any member of your party is abusive or disruptive or behaves in a way which, in our reasonable opinion, could cause damage or injury to others or affect their enjoyment of their holiday, or which could damage property, we have the right, after reasonable consideration, to terminate your contract with us.

If this happens we will have no further obligations or liability to you. The coach driver/representative, ship's captain, or authorised official of other means of transport is entitled to refuse you boarding if in their reasonable opinion you are unacceptably under the influence of drink or drugs or you are being violent or disruptive.

If you are refused boarding on the outward journey we will regard it as a cancellation by you and we will apply cancellation charges according to the scale set out above. If the refusal is on the return journey we have the right to terminate the contract and will have no further obligations or liability to you.

## 23. No smoking policy

Smoking is not permitted on our coaches, this includes E-Cigarettes.

## 24. Pets

We do not allow pets to be taken on our packages. Registered Assistance Dogs will normally be accommodated on UK packages but not on overseas packages.

## 25. Pick up point, itineraries, travel documents and passport

You are responsible for ensuring that you are at the correct departure point, at the correct time, with the correct documents and we cannot be held liable for any loss or expense suffered by you or your party because of an incorrect passport or late arrival at the departure point.

If you are a British citizen travelling outside the United Kingdom you must have a full UK passport valid for a minimum of three months after your scheduled date of return. Non-UK citizens must seek passport and visa advice from the relevant consulates or embassies of the countries you plan to visit prior to making a booking for one of our packages (and you are advised to check with the relevant consulate or embassy to ensure you allow sufficient time before your departure to apply for a visa).

The name on the passport must match the name on the ticket. If someone in your party changes name after the booking is made you must tell us immediately so that we can issue the ticket in the new name.

When you have paid the balance we will send you or your booking agent all the necessary labels so that you receive them in good time for your holiday. Certain travel documents may have to be retained by us and your driver/courier will then issue them to you at the relevant time. If you lose a travel document after it has been issued to you we will require you to meet the direct cost charged by the carrier/supplier for the issue of a duplicate or replacement.

Gibbons Holidays reserve the right to modify itineraries to conform with requests from the competent authorities in the United Kingdom and any other sovereign state through which the tour will operate. We recommend that you read the British Foreign and Commonwealth Office (FCO) advice about your holiday at [www.fco.gov.uk](http://www.fco.gov.uk).

Excursions which are included in the cost of your booking and are part of your package are detailed on the relevant brochure page and refunds will not be made for any excursion not taken. Optional excursions may be booked and paid for in resort but these will not form part of your booking.

Admission fees to buildings, grounds etc. are not included in the price of the package unless otherwise stated on the relevant brochure page.

## 26. What happens if I am delayed?

Your travel insurance may cover you for some delays. In addition where you are delayed for more than six hours in any one day we will seek to minimise any discomfort and where possible, arrange for refreshments and meals.

## 27. Do I need to take out travel insurance?

We strongly advise all our customers to take out travel insurance to cover medical and repatriation costs, personal injury, loss of baggage and cancellation charges. If you do not have adequate insurance and require our assistance during your package, we reserve the right to reclaim from you any medical repatriation or other expenses which we may incur on your behalf which would otherwise have been met by insurers.



**28. What assistance will you give me if things go wrong when it is not your fault?**

In addition to what has already been stated (and without affecting that), if you, or any member of your party, suffer death, illness or injury whilst overseas arising out of an activity which does not form part of your package travel arrangements or an excursion arranged through us in the UK, we shall at our discretion, offer advice, guidance and assistance.

Where legal action is contemplated and you want our assistance, you must obtain our written consent prior to commencement of proceedings. Our consent will be given subject to you undertaking to assign any costs, benefits received under any relevant insurance policy to ourselves. We limit the cost of our assistance to you and any member of your party to £5000 per party.

**29. Passengers with disabilities**

We want to ensure the arrangements for your package are suitable and appropriate. Not all the packages in this brochure may be suitable for you and if we reasonably consider we cannot provide what is required, we will not accept the booking.

Should you or a member of your party have any medical condition or disability that may affect your/their holiday or that of other passengers, you must provide full written details to us at the time of booking so that we can advise you of the suitability of the holiday.

This applies whether the booking is made on-line, in person, in writing, or by telephone. If a particular issue is identified, we reserve the right to request a doctor's certificate confirming that the passenger is fit for travel and reserve the right to refuse any booking in the absence of such doctor's certificate being produced upon request.

If a passenger requires personal assistance (for example but not limited to assistance with feeding/dressing/toileting/mobilising) then this passenger must travel with an able bodied companion/carer and written confirmation that such assistance will be provided for the entirety of the holiday is required at the time of booking. Coach drivers/tour managers are unable to offer such assistance.

Whilst we will make every reasonable adjustment to do so, if we are unable to accommodate the needs of a passenger or believe that the medical condition or disability of a passenger is likely to adversely affect other passengers, we reserve the right to decline the booking.

We also reserve the right to cancel any holiday and impose cancellation charges if we are not fully advised of any relevant disability or medical condition at the time the booking is made and subsequently decide that we are unable to accommodate this passenger.

This applies whether we advise that we are unable to accommodate a passenger either before departure or during the holiday and if this occurs during the holiday then we will seek the additional costs of returning the passenger home.

We want you to enjoy your package and will try to help you select an appropriate trip. If you need advice or further information either you or your booking agent should contact Gibbons Coaches.

**30. Special requests**

If you require a special diet please tell us before booking, or as soon as you are medically advised, and send us a copy of the diet. We will notify the hotel or hotels identified in your booking but please note that some hotels may not have facilities to provide special diets and we cannot be held liable for their failure to do so unless the hotel has confirmed in writing that a special diet will be catered for.

Where we think that a hotel is likely to be unable to cope with a special diet, we will tell you prior to your booking confirmation being issued so that you can exercise your right to cancel your package booking without charge. Any extra costs incurred by you during your package must be paid to the hotel by you prior to departure from the hotel.

You should also detail any other requests, for example, low floor rooms, particular rooms or locations on the special requests section of the booking form [or other method of confirming in writing that the request was made.] We will pass your request to the relevant supplier but this does not necessarily mean that your request will be fulfilled. If a request can be fulfilled you may incur an extra charge payable either to us or direct to the hotel. Please note that requests cannot be guaranteed unless we confirm on your booking confirmation that this is a guaranteed requirement.

**31. Single Occupancy**

Single occupancy of rooms when available may be subject to a supplementary charge and this will be shown on the brochure page.

**32. Entertainment [optional paragraph]**

Some of our hotels arrange additional entertainment. Where this is part of the package details are given on the respective brochure page. Where it is not specified it may still be available but is at the discretion of the hotel and is not guaranteed. It may be withdrawn if there is a lack of demand or for operational reasons.

**33. Data Protection Act**

In order to process your booking and to ensure that your travel arrangements run smoothly and meet your requirements we, and your travel agent, need to use the information you provide such as name, address, any special needs/dietary requirements etc.

We take full responsibility for ensuring that proper measures are in place to protect your information. We must pass the information on to the relevant suppliers of your travel arrangements such as hotels, transport companies etc. The information may also be supplied to security or credit checking companies, public authorities such as customs/immigration if required by them, or as required by law.

Additionally, where your package is outside the European Economic Area (EEA), controls on data protection in your destination may not be as strong as the legal requirements in this country. We will not, however, pass information on to any person not responsible for part of your travel arrangements.

This applies to any sensitive information that you give to us such as details of any disabilities or dietary/religious requirements. If we cannot pass this information to the relevant suppliers, whether in the EEA or not, we cannot provide your booking. In making this booking, you consent to this information being passed on to the relevant persons. Please note that where information is held by your travel agent, this is subject to your agent's own data protection policy.

Your data controller is Gibbons Holidays. You are entitled to a copy of your information held by us. If you would like to see this, please contact us.

We retain your full contact details and other information in secure files and electronic storage facilities. We may use this information to contact you by mail, telephone or electronic means.

We will provide you with details of other goods and services including those of selected third parties. If you do not wish to receive the further information about products and services [from either ourselves or third parties] please write to the data controller.

**34. Publication date and details**

This brochure was printed in the United Kingdom by Gibbons Holidays, September, 2016.

Gibbons Holidays are members of the Bonded Coach Holiday Group of the Confederation Of Passenger Transport UK Ltd. This is a government approved consumer protection scheme.

This ensures that in relation to the coach package holidays described in this brochure (or website) that the clients' monies are protected by a Bond which may be called upon in the unlikely event of the Member's Insolvency.

Clients are recommended to inspect the current membership certificate at our registered office or alternatively go to [www.bch-uk.org](http://www.bch-uk.org) or telephone 0207 240 3131 to confirm current membership.

Your attention is also drawn to the Bonded Coach Holiday Group Trading Charter that will apply to these coach package holidays, a copy of which is available upon request.





# GIBBONS

## COACH HOLIDAYS

17 Upper High Street, Bedlinog, South Wales. CF46 6RY

**TEL: 01443 710604**

To book onto any of our trips and Holidays you can simply call the booking office where our friendly staff will be pleased to help.

Our Office is open between the hours of 9:30am-5:00pm Monday to Friday.

Established 1993

[www.gibbonscoaches.com](http://www.gibbonscoaches.com)



Published: 06.10.2016